



VA.9.165/..

- high load-bearing capacity
- vibration-free trafficability
- visible surface in stainless steel

FEATURES

watertight, resistant to heavy loads, trafficable by fork-lift trucks, abrasion-, weather- and temperature-resistant (-40°C to +120°C), resistant to de-icing salt and waste water (alkalis, microbes, bacteria)

APPLICATIONS

parking decks, parking garages, underground garages, all industrial applications, areas with use of driverless vehicular systems, exhibition halls

MATERIAL

substructure hot-dip galvanised steel and visible surface stainless steel V2A (V4A on request), Wolfin IB sealing membrane

COVERING TYPES

coating, concrete, screed, industrial coverings

TRAFFICABILITY

industrial trucks (lifting trucks, fork-lifts etc.), passenger cars, trucks

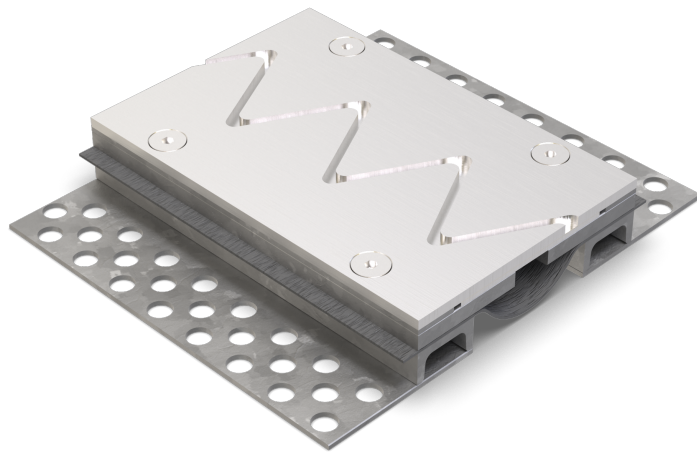
FORMED PARTS

corner piece, T-piece, cross piece, floor-wall connections, upstand, membrane upstand

NOTES

The sealing membrane is flanged with M10 at intervals of 150 mm. The sealing membrane projecting from the joint profile must be integrated into the sealing system to prevent water infiltration from the sides.

Installation by our own fitters recommended.



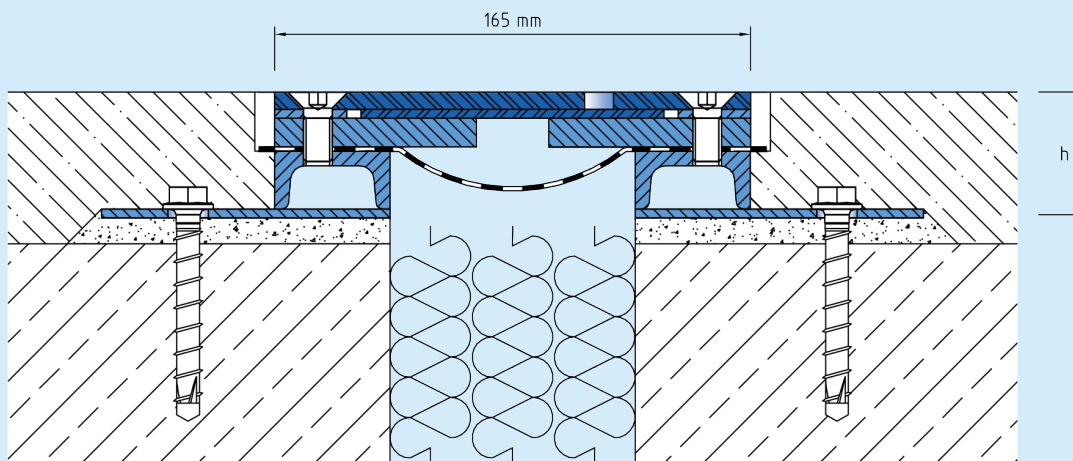
TECHNICAL DATA

Movement horizontal: 30 mm (-10/+20 mm)
 Visible width: 165 mm
 Maximal joint width: 80 mm
 Load rating: wheel load 5000 kg up to Ø 150 mm, B = 100 mm
 Load rating trucks: 600 kN (DIN 1072)
 Load rating forklifts: 150 kN (DIN 1055-3)
 Supply length: 3 mtr

DESIGNS

ARTICLE NO.	PROFILE HEIGHT (h)	RECESS (BxT)
VA.9.165/30	30 mm	380 x 40 mm
VA.9.165/36	36 mm	380 x 46 mm
VA.9.165/44	44 mm	380 x 54 mm
VA.9.165/59	59 mm	380 x 69 mm
VA.9.165/74	74 mm	380 x 84 mm
VA.9.165/89	89 mm	460 x 99 mm
VA.9.165/104	104 mm	460 x 114 mm
VA.9.165/120	120 mm	460 x 130 mm
VA.9.165/150	150 mm	460 x 160 mm

Special heights on request.



Subject to technical change without notice.

VA.9.165