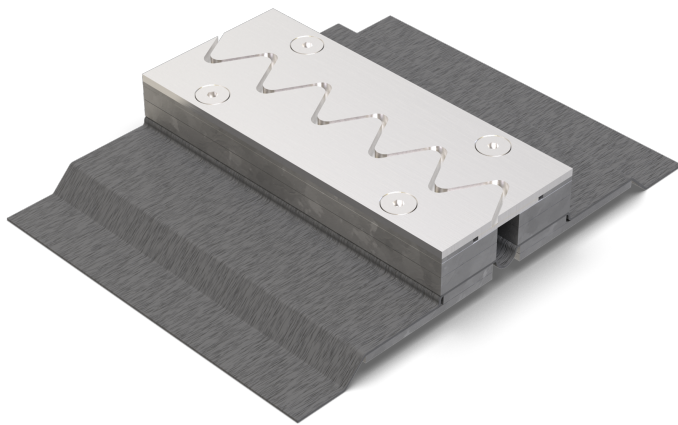




VA.9.108/.. F

- high load-bearing capacity
- vibration-free trafficability
- visible surface in stainless steel



FEATURES

watertight, resistant to heavy loads, trafficable by fork-lift trucks, abrasion-, weather- and temperature-resistant (-40°C to +120°C), resistant to de-icing salt and waste water (alkalis, microbes, bacteria)

APPLICATIONS

parking decks, parking garages, underground garages, ramp crossings, pedestrian bridges, all industrial applications

MATERIAL

substructure hot-dip galvanised steel and visible surface stainless steel V2A (V4A on request), Wolfin IB sealing membrane

COVERING TYPES

asphalt, screed, bitumen welding membrane, liquid plastic, Flüssigkunststoff

TRAFFICABILITY

industrial trucks (lifting trucks, fork-lifts etc.), passenger cars, trucks

FORMED PARTS

corner piece, T-piece, cross piece, floor-wall connections, upstand, membrane upstand

NOTES

The sealing membrane is flanged with M10 at intervals of 150 mm. The sealing membrane projecting from the joint profile must be integrated into the sealing system to prevent water infiltration from the sides.

Installation by our own fitters recommended.

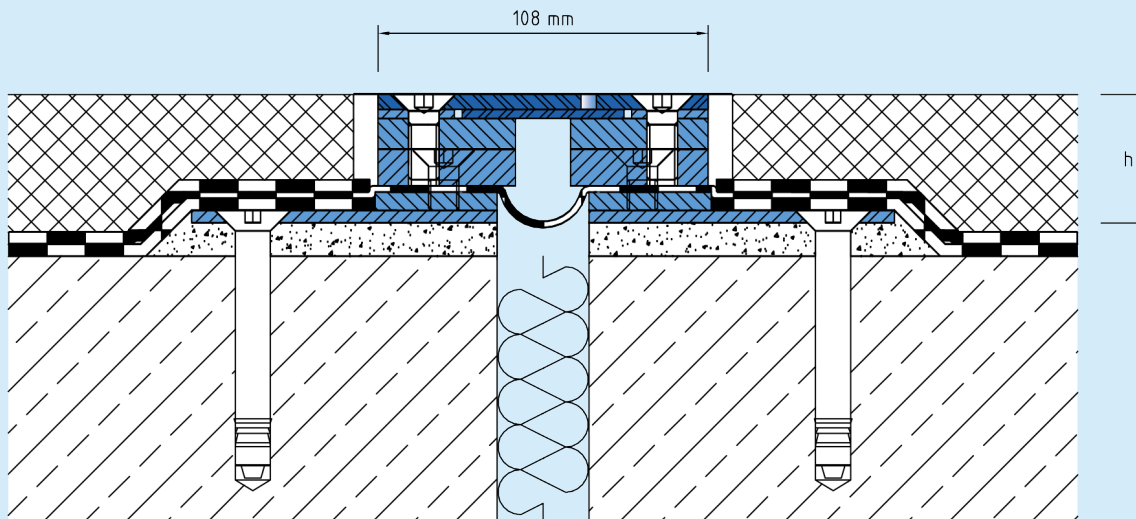
TECHNICAL DATA

Movement horizontal:	15 mm (-5/+10 mm)
Visible width:	108 mm
Maximal joint width:	50 mm
Load rating:	wheel load 5000 kg up to Ø 150 mm, B = 100 mm
Load rating trucks:	600 kN (DIN 1072)
Load rating forklifts:	150 kN (DIN 1055-3)
Supply length:	3 mtr

DESIGNS

ARTICLE NO.	PROFILE HEIGHT (h)	RECESS (BxT)
VA.9.108/43 F	43 mm	1000 x 53 mm
VA.9.108/57 F	57 mm	1000 x 67 mm
VA.9.108/72 F	72 mm	1000 x 82 mm
VA.9.108/87 F	87 mm	1000 x 97 mm
VA.9.108/102 F	102 mm	1000 x 112 mm
VA.9.108/117 F	117 mm	1000 x 127 mm
VA.9.108/130 F	130 mm	1000 x 140 mm

Special heights on request.



VA.9.108

Subject to technical change without notice.