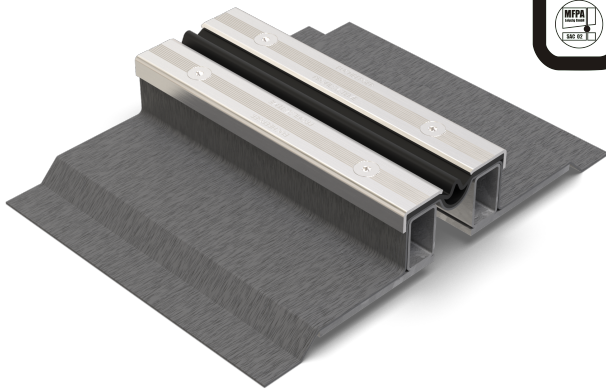




VA.8.95/.. F

- high load-bearing capacity
- anti-slip structured visible surface
- with general building authority test certificate



FEATURES

watertight, resistant to heavy loads, trafficable by fork-lift trucks, expansion insert can be replaced anytime, abrasion-, weather- and temperature-resistant (-40°C to +120°C), resistant to de-icing salt and waste water (alkalis, microbes, bacteria)

APPLICATIONS

parking decks, parking garages, underground garages, ramp crossings, pedestrian bridges, all industrial applications

MATERIAL

substructure hot-dip galvanised steel and visible surface stainless steel V2A (V4A on request), EPDM expansion insert, Wolfin IB sealing membrane

COVERING TYPES

asphalt, screed, natural and stone slabs, bitumen welding membrane, liquid plastic, Flüssigkunststoff

TRAFFICABILITY

passenger cars, trucks, fork-lifts

FORMED PARTS

corner piece, T-piece, cross piece, floor-wall connections, upstand, membrane upstand

NOTES

The sealing and expansion insert is flanged with screws M8 at intervals of 150 mm.

The sealing membrane projecting from the joint profile must be integrated into the sealing system to prevent water infiltration from the sides.

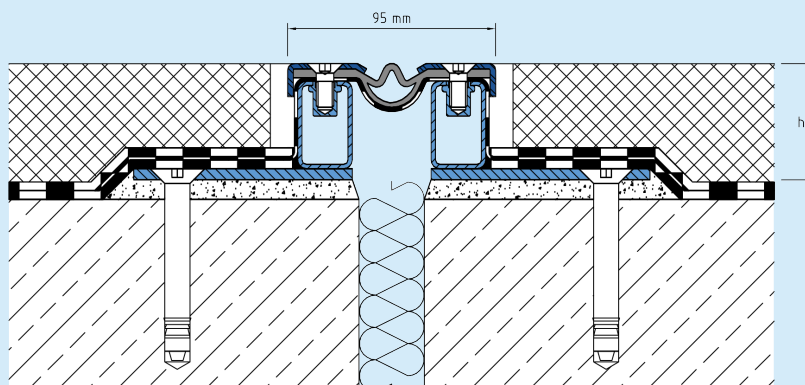
Bei Profilhöhe 23 mm geringe Belagsüberdeckung.
Installation by our own fitters recommended.

TECHNICAL DATA

Movement horizontal:	40 mm (±20 mm)
Movement vertical:	20 mm (±10 mm)
Visible width:	95 mm
Maximal joint width:	60 mm
Load rating:	wheel load 4500 kg up to Ø 150 mm, B = 100 mm
Load rating trucks:	600 kN (DIN 1072)
Load rating forklifts:	150 kN (DIN 1055-3)
Supply length:	3 mtr
Color of expansion insert:	schwarz

DESIGNS

ARTICLE NO.	PROFILE HEIGHT (h)	RECESS (BxT)
VA.8.95/22 F	23 mm	1000 x 33 mm
VA.8.95/37 F	38 mm	1000 x 48 mm
VA.8.95/42 F	43 mm	1000 x 53 mm
VA.8.95/52 F	53 mm	1000 x 63 mm
VA.8.95/62 F	63 mm	1000 x 73 mm
VA.8.95/92 F	93 mm	1000 x 103 mm



Subject to technical change without notice.

VA.8.95