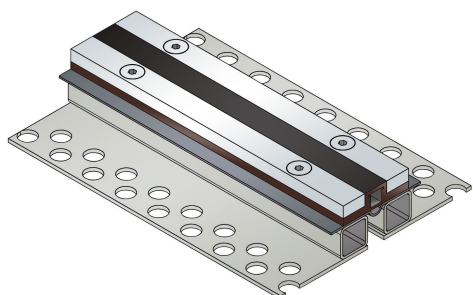




VA.8.60/.. G

- high load-bearing capacity
- hygienic, smooth insert
- narrow visible surface



FEATURES

watertight, resistant to heavy loads, trafficable by fork-lift trucks, expansion insert can be replaced anytime, abrasion, weather and temperature resistant (-40°C bis +120°C), resistant to salt and waste-water (alcalics, microbes, bacteria), agreements may also be made for other sealing sections

APPLICATIONS

all industrial applications, areas with increased hygiene standards (e.g. kitchens, hospitals etc.)

MATERIAL

hot-dip galvanised steel substructure and high-grade steel V2A surface, synthetic rubber flexible insert (EPDM), sealing insert made from Wolfin IB

COVERING TYPES

coating, concrete, screed, industrial covering, natural and stone slabs

TRAFFICABILITY

passenger car, trucks, fork-lifts

FORMED PARTS

upstand, end piece, corner piece, T piece, cross piece, transition floor to wall

NOTES

The sealing and flexible inserts are connected using M8 bolts positioned at intervals of 150 mm.

The sealing insert which is looking on the sides of the profile out, has to be connected properly with the sealing system. This is very important to get a watertight result of the joint-profile.

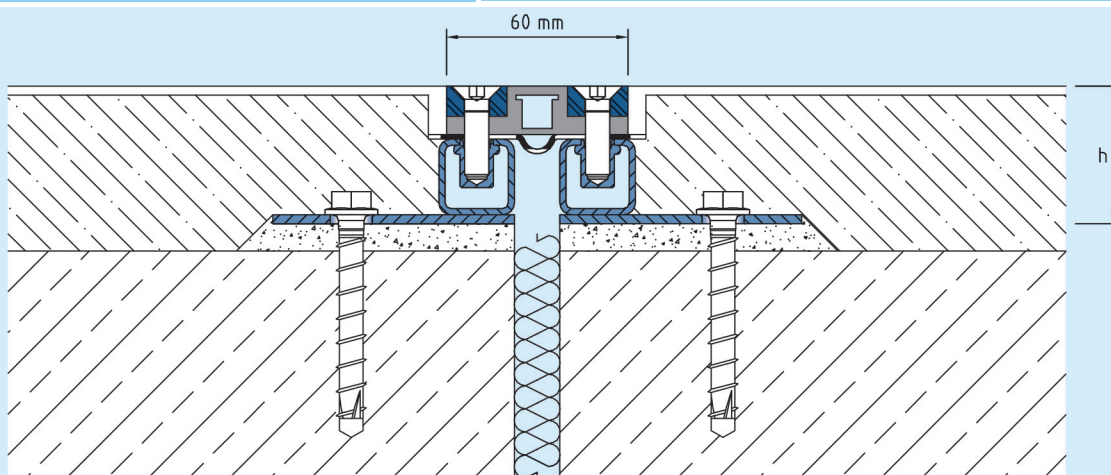
Our engineers and technicians can be of assistance during installation on request.

Technical data

Movement horizontal:	6 mm (±3 mm)
Movement vertical:	4 mm (±2 mm)
Visible width:	60 mm
Maximal joint width:	20 mm
Load rating:	wheel load 2500 kg up to Ø 150 mm, B = 100 mm
Load rating trucks:	600 kN (DIN 1072)
Load rating forklifts:	70 kN (DIN 1055-3)
Supply length:	3 mtr
Color of flexible insert:	black

Designs

Article No.	Profile height (h)	Recess(WxD)
VA.8.60/26 G	26 mm	220 x 36 mm
VA.8.60/30 G	30 mm	220 x 40 mm
VA.8.60/45 G	45 mm	220 x 55 mm
VA.8.60/60 G	60 mm	220 x 70 mm
VA.8.60/70 G	70 mm	220 x 80 mm
VA.8.60/100 G	100 mm	220 x 110 mm



VA.8.60

Subject to technical change without notice.