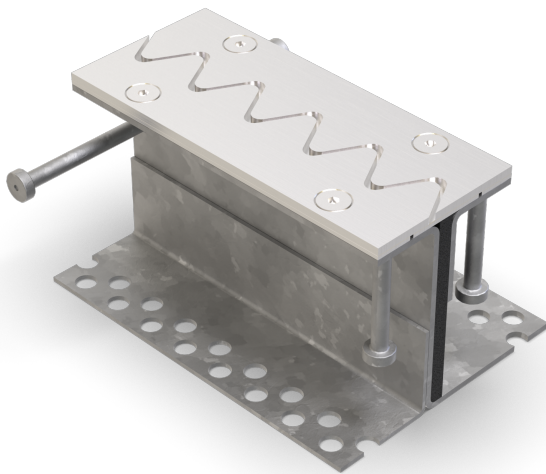




VA.7.110/..

- for heavy loads
- vibration-free trafficability
- optimum edge protection
- continuous load transfer



FEATURES

resistant to heavy loads, trafficable by fork-lift trucks, lost formwork element for optimum joint edge protection of work-/compression joints in highly stressed industrial concrete floors, continuous load transfer (thus preventing load-related height offset)

APPLICATIONS

all industrial applications

MATERIAL

substructure hot-dip galvanised steel and visible surface stainless steel V2A (V4A on request), EPDM cellular rubber in the central section

COVERING TYPES

concrete, industrial coverings

TRAFFICABILITY

industrial trucks (lifting trucks, fork-lifts etc.), passenger cars, trucks

FORMED PARTS

corner piece, T-piece, cross piece

NOTES

Also available with tube sleeve for on-site shear force dowel.

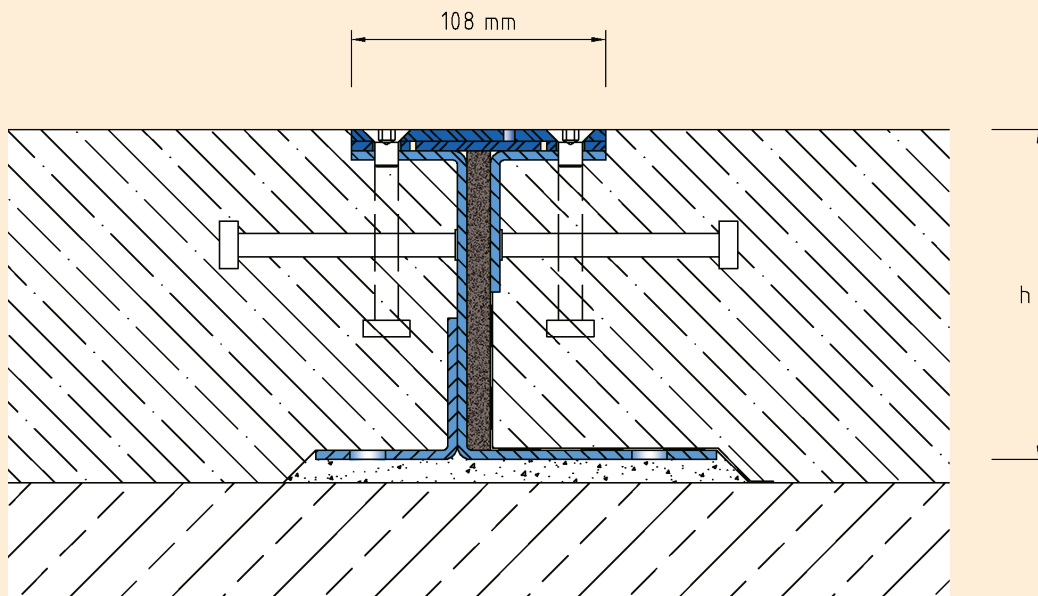
TECHNICAL DATA

Movement horizontal: 13 mm (-5/+8 mm)
 Visible width: 108 mm
 Load rating: wheel load 5000 kg up to Ø 150 mm, B = 100 mm
 Load rating trucks: 600 kN (DIN 1072)
 Load rating forklifts: 150 kN (DIN 1055-3)
 Supply length: 3 mtr

DESIGNS

ARTICLE NO.	PROFILE HEIGHT (h)
VA.7.110/140	140 mm
VA.7.110/160	160 mm
VA.7.110/180	180 mm
VA.7.110/200	200 mm

Special heights on request.



VA.7.110

Subject to technical change without notice.