



## VA.6.230/..

- for heavy loads
- vibration-free trafficability
- visible surface in stainless steel

### FEATURES

resistant to heavy loads, trafficable by fork-lift trucks, perforated bearing legs guarantee the best connection to the substrate/covering

### APPLICATIONS

all industrial applications, areas with use of driverless vehicular systems, shopping centres, railway stations, airports, exhibition halls

### MATERIAL

substructure hot-dip galvanised steel and visible surface stainless steel V2A (V4A on request)

### COVERING TYPES

coating, concrete, screed, industrial coverings, natural and stone slabs

### TRAFFICABILITY

industrial trucks (lifting trucks, fork-lifts etc.), passenger cars, trucks

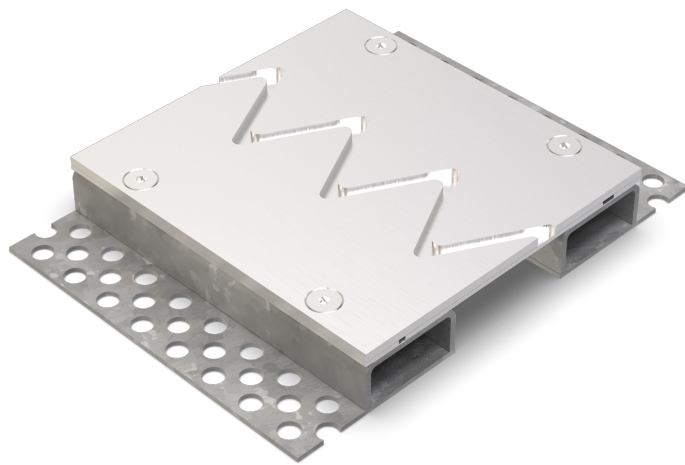
### FORMED PARTS

corner piece, T-piece, cross piece, floor-wall connections

### NOTES

Depending on the floor covering, we recommend installing a grouting seal between the joint profile and the covering to prevent the hairline crack caused by the building physics.

This joint profile is also available in black steel.



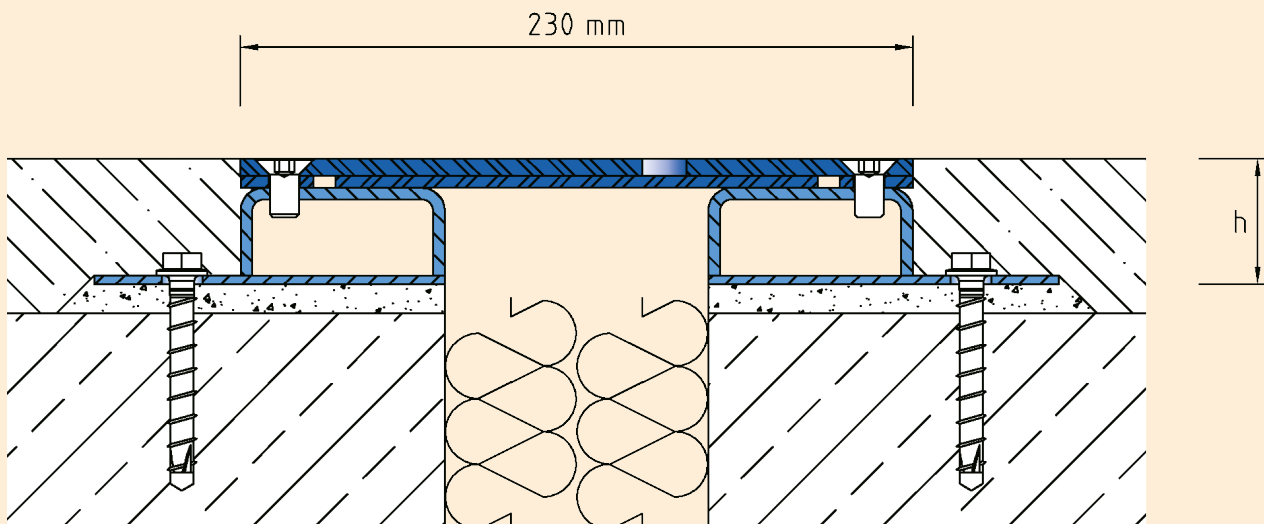
### TECHNICAL DATA

Movement horizontal:	35 mm (-15/+20 mm)
Visible width:	230 mm
Maximal joint width:	90 mm
Load rating:	wheel load 3500 kg up to Ø 150 mm, B = 100 mm
Load rating trucks:	600 kN (DIN 1072)
Load rating forklifts:	120 kN (DIN 1055-3)
Supply length:	3 mtr

### DESIGNS

ARTICLE NO.	PROFILE HEIGHT (h)	RECESS (BxT)
VA.6.230/33	33 mm	370 x 43 mm
VA.6.230/43	43 mm	370 x 53 mm
VA.6.230/55	55 mm	370 x 65 mm
VA.6.230/65	65 mm	370 x 75 mm
VA.6.230/80	80 mm	370 x 90 mm

Special heights on request.



# VA.6.230

Subject to technical change without notice.