



VA.1.56/..

- replaceable expansion insert
- non-PVC
- stable aluminum supports
- stainless steel profile edge

FEATURES

expansion insert can be replaced anytime, abrasion-, weather- and temperature-resistant (-40°C to +120°C), perforated bearing legs guarantee the best connection to the substrate/covering

APPLICATIONS

residential, office and administration buildings

MATERIAL

aluminium support with stainless steel profile edge, EPDM expansion insert

COVERING TYPES

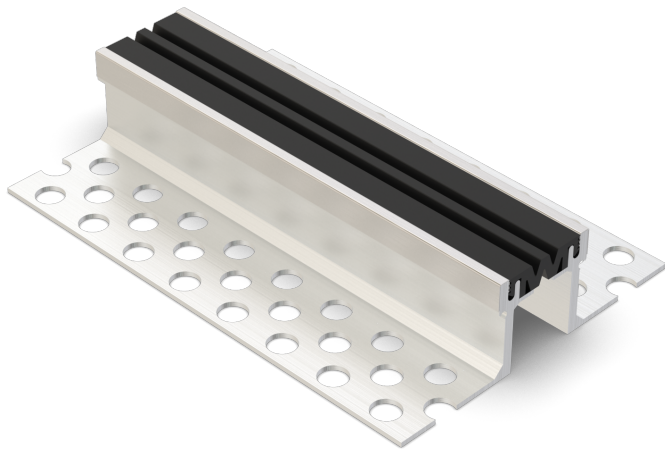
screed, natural and stone slabs

FORMED PARTS

corner piece, T-piece, cross piece, floor-wall connections

NOTES

For mastic asphalt, please ask for technical advice.



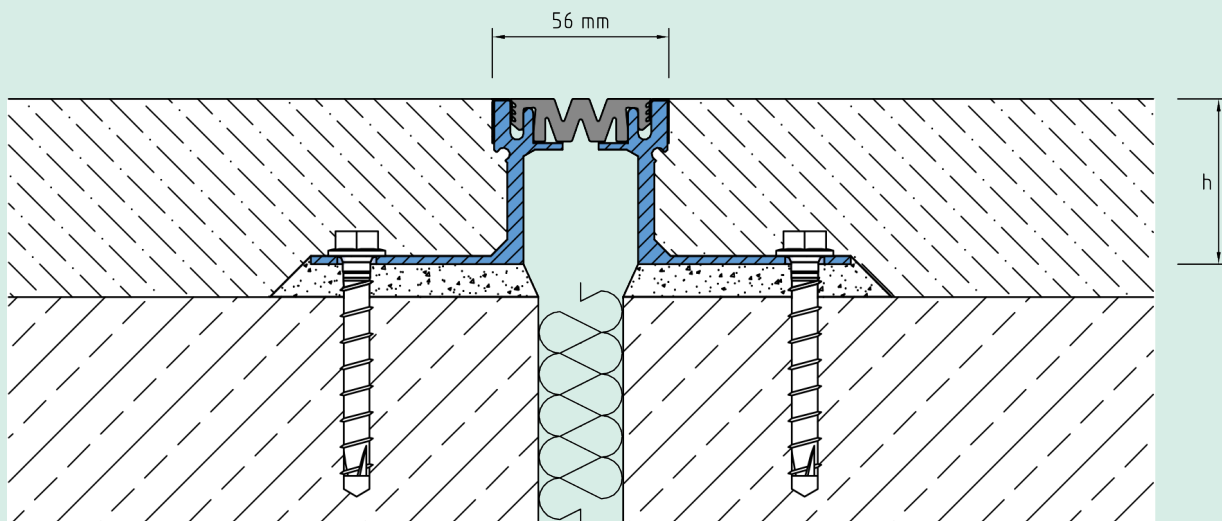
TECHNICAL DATA

Movement horizontal:	16 mm (±8 mm)
Movement vertical:	12 mm (±6 mm)
Visible width:	56 mm
Maximal joint width:	40 mm
Load rating:	wheel load 700 kg up to Ø 150 mm, B = 100 mm
Supply length:	3 mtr
Color of expansion insert:	schwarz

DESIGNS

ARTICLE NO.	PROFILE HEIGHT (h)	RECESS (BxT)
VA.1.56/21	21 mm	210 x 31 mm
VA.1.56/34	34 mm	210 x 44 mm
VA.1.56/51	51 mm	210 x 61 mm
VA.1.56/64	64 mm	210 x 74 mm
VA.1.56/84	84 mm	210 x 94 mm
VA.1.56/104	104 mm	210 x 114 mm
VA.1.56/124	124 mm	210 x 134 mm

Special heights on request.



VA.1.56

Subject to technical change without notice.