



## VA.1.26/..

- replaceable expansion insert
- narrow visible surface
- stable aluminum supports
- stainless steel profile edge

### FEATURES

expansion insert can be replaced anytime, abrasion-, weather- and temperature-resistant (-40°C to +120°C), perforated bearing legs guarantee the best connection to the substrate/covering

### APPLICATIONS

shopping centres, railway stations, airports, exhibition halls, residential, office and administration buildings

### MATERIAL

aluminium support with stainless steel profile edge, EPDM expansion insert

### COVERING TYPES

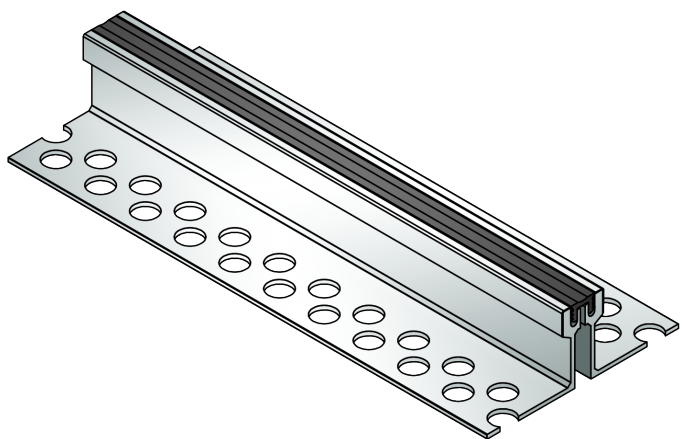
coating, screed, natural and stone slabs

### FORMED PARTS

corner piece, T-piece, cross piece

### NOTES

For mastic asphalt, please ask for technical advice.

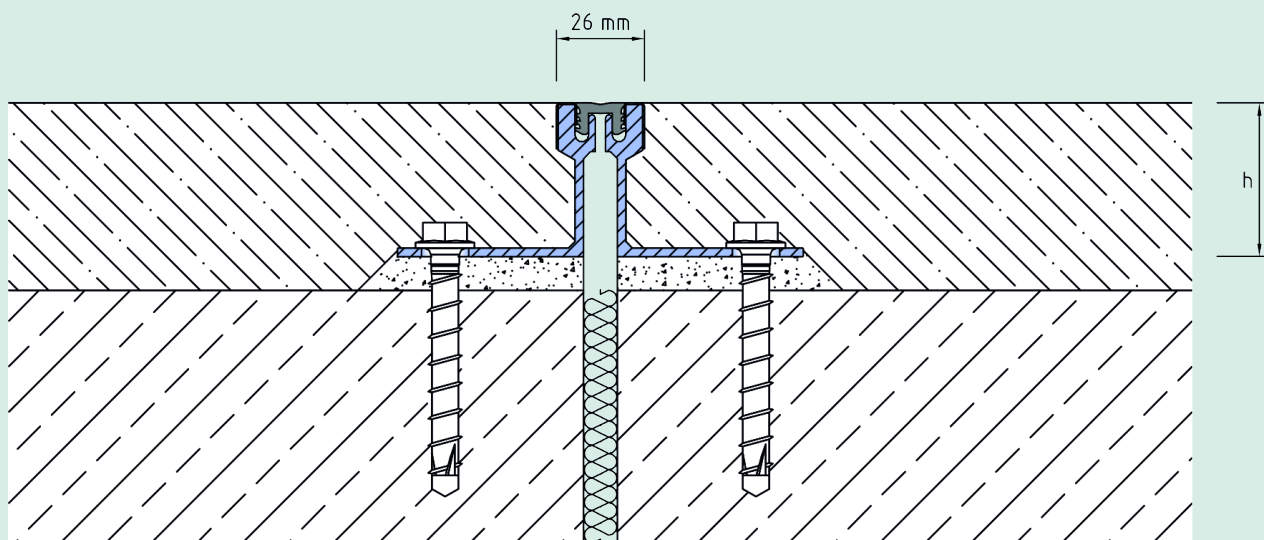


### TECHNICAL DATA

Movement horizontal:	4 mm ( $\pm 2$ mm)
Movement vertical:	2 mm ( $\pm 1$ mm)
Visible width:	26 mm
Maximal joint width:	20 mm
Load rating:	wheel load 700 kg up to $\varnothing$ 150 mm, B = 100 mm
Supply length:	3 mtr
Color of expansion insert:	schwarz oder grau

### DESIGNS

ARTICLE NO.	PROFILE HEIGHT <sup>(h)</sup>	RECESS <sup>(BxT)</sup>
VA.1.26/31	31 mm	160 x 41 mm
VA.1.26/46	46 mm	160 x 56 mm
VA.1.26/61	61 mm	160 x 71 mm



VA.1.26

Subject to technical change without notice.