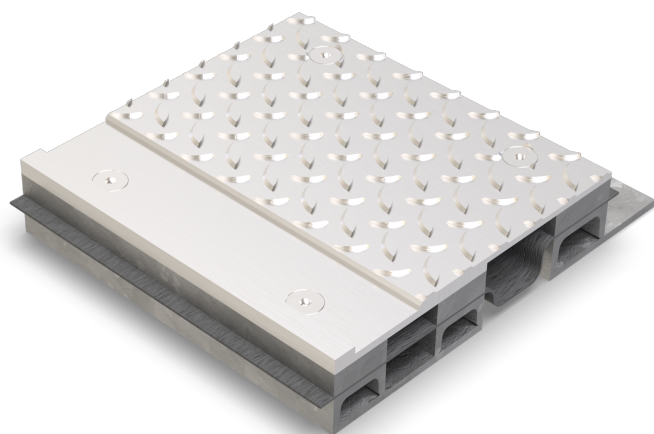




VA.10.230/..

- **high load-bearing capacity**
- **visible surface in stainless steel**
- **anti-slip surface**



FEATURES

watertight, resistant to heavy loads, trafficable by fork-lift trucks, abrasion-, weather- and temperature-resistant (-40°C to +120°C), resistant to de-icing salt and waste water (alkalis, microbes, bacteria), a different sealing membrane can be used by arrangement

APPLICATIONS

parking decks, parking garages, underground garages, ramp crossings, pedestrian bridges, all industrial applications

MATERIAL

substructure hot-dip galvanised steel and visible surface stainless steel V2A (V4A on request), Wolfen IB sealing membrane

COVERING TYPES

coating, concrete, screed, industrial coverings, natural and stone slabs

TRAFFICABILITY

industrial trucks (lifting trucks, fork-lifts etc.), passenger cars, trucks

FORMED PARTS

end piece, membrane upstand, corner piece, T-piece, cross piece, floor-wall connections

NOTES

The sealing membrane projecting from the joint profile must be integrated into the sealing system to prevent water infiltration from the sides.

The sealing membrane is flanged with screws M10 at intervals of 150 mm.

This joint profile is also available for a bigger movement. Installation by our own fitters recommended.

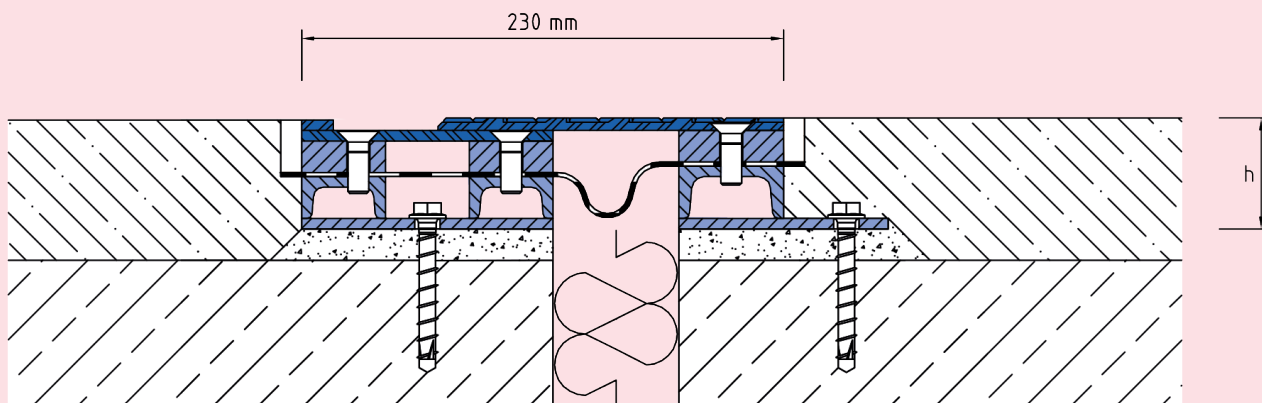
TECHNICAL DATA

Movement horizontal:	100 mm (±50 mm)
Visible width:	230 mm
Maximal joint width:	60 mm
Load rating:	wheel load 4000 kg up to Ø 150 mm, B = 100 mm
Load rating trucks:	600 kN (DIN 1072)
Load rating forklifts:	150 kN (DIN 1055-3)
Supply length:	3 mtr

DESIGNS

ARTICLE NO.	HEIGHT (h)	RECESS (BxT)
VA.10.230/52	52 mm	350 x 65 mm
VA.10.230/82	82 mm	350 x 95 mm

Special heights on request.



Subject to technical change without notice.

VA.10.230