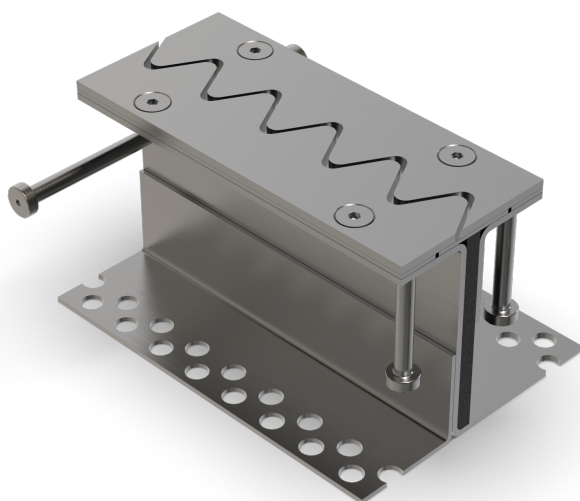




## ST.7.110/..

- for heavy loads
- vibration-free trafficability
- optimum edge protection
- continuous load transfer



### FEATURES

resistant to heavy loads, trafficable by fork-lift trucks, lost formwork element for optimum joint edge protection of work-/compression joints in highly stressed industrial concrete floors, continuous load transfer (thus preventing load-related height offset)

### APPLICATIONS

all industrial applications

### MATERIAL

black steel, EPDM cellular rubber in the central section

### COVERING TYPES

concrete, industrial coverings

### TRAFFICABILITY

industrial trucks (lifting trucks, fork-lifts etc.), passenger cars, trucks

### FORMED PARTS

corner piece, T-piece, cross piece

### NOTES

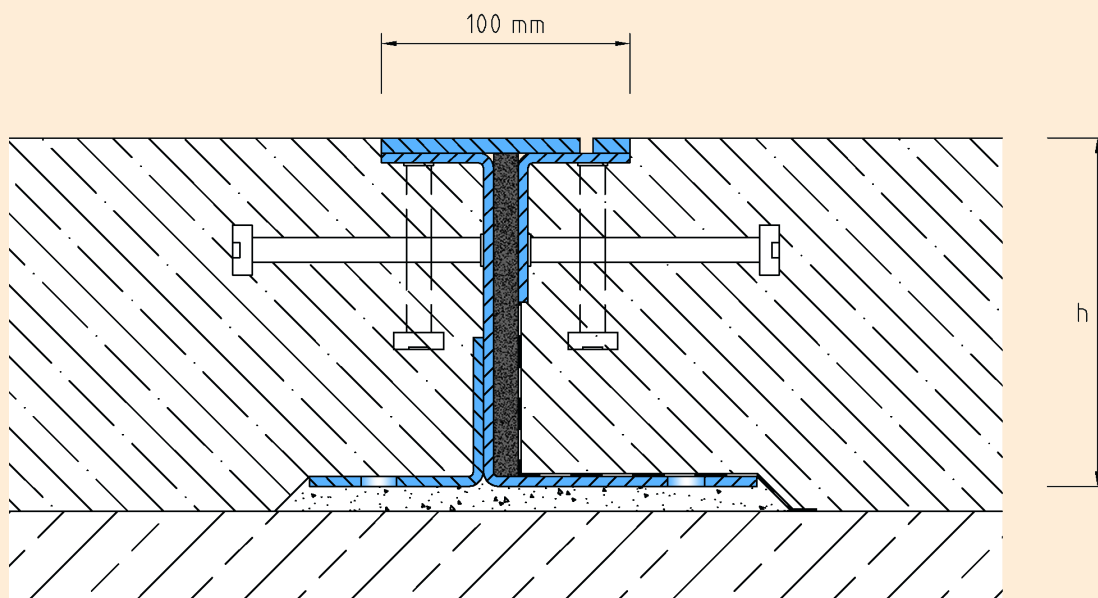
Also available with tube sleeve for on-site shear force dowel.

### TECHNICAL DATA

Movement horizontal:	13 mm (-5/+8 mm)
Visible width:	108 mm
Load rating:	wheel load 5000 kg up to Ø 150 mm, B = 100 mm
Load rating trucks:	600 kN (DIN 1072)
Load rating forklifts:	150 kN (DIN 1055-3)
Supply length:	3 mtr

### DESIGNS

ARTICLE NO.	PROFILE HEIGHT <sup>(h)</sup>
ST.7.110/140	140 mm
ST.7.110/160	160 mm
ST.7.110/180	180 mm
ST.7.110/200	200 mm
Special heights on request.	



ST.7.110

Subject to technical change without notice.