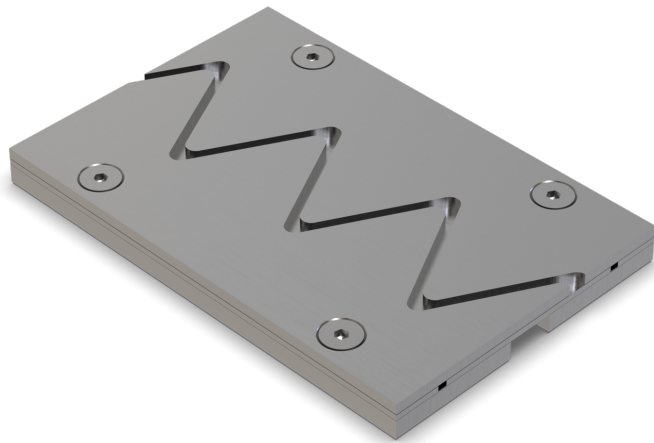




## ST.6.165/19

- for heavy loads
- low installation height
- vibration-free trafficability



### FEATURES

resistant to heavy loads, trafficable by fork-lift trucks, due to the special profile design, no bearing leg slips under the covering (this prevents the covering from tearing off in the case of thin coverings)

### APPLICATIONS

all industrial applications, areas with use of driverless vehicular systems, shopping centres, railway stations, airports, exhibition halls

### MATERIAL

black steel

### COVERING TYPES

coating, concrete, screed, industrial coverings, magnesia flooring, natural and stone slabs

### TRAFFICABILITY

industrial trucks (lifting trucks, fork-lifts etc.), passenger cars, trucks

### FORMED PARTS

corner piece, T-piece, cross piece, floor-wall connections

### NOTES

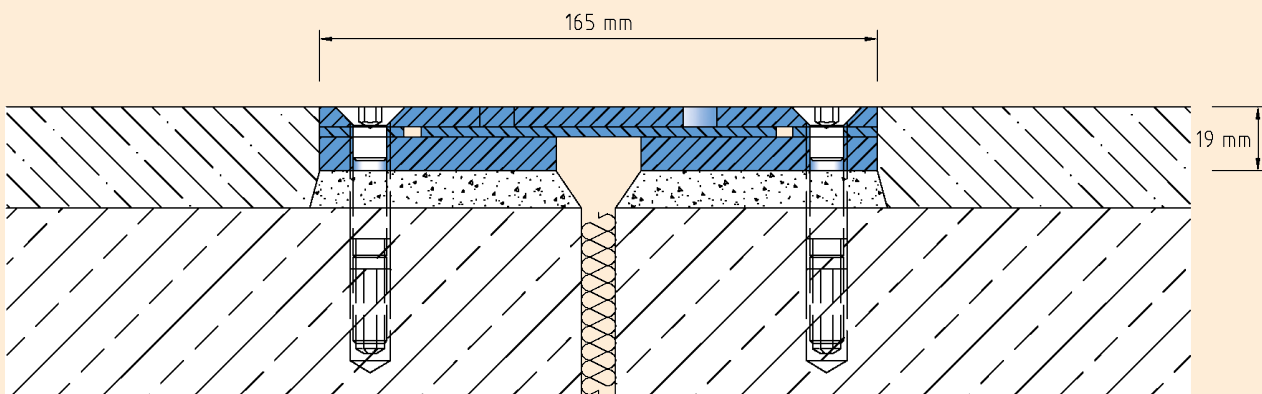
Depending on the floor covering, we recommend installing a grouting seal between the joint profile and the covering to prevent the hairline crack caused by the building physics.

### TECHNICAL DATA

Movement horizontal:	30 mm (-10/+20 mm)
Visible width:	165 mm
Maximal joint width:	15 mm
Load rating:	wheel load 5000 kg up to Ø 150 mm, B = 100 mm
Load rating trucks:	600 kN (DIN 1072)
Load rating forklifts:	150 kN (DIN 1055-3)
Supply length:	3 mtr

### DESIGNS

ARTICLE NO.	PROFILE HEIGHT (h)	RECESS (BxT)
ST.6.165/19	19 mm	300 x 29 mm



# ST.6.165

Subject to technical change without notice.