



ST.6.110/..

- for heavy loads
- vibration-free trafficability

FEATURES

resistant to heavy loads, trafficable by fork-lift trucks, perforated bearing legs guarantee the best connection to the substrate/covering

APPLICATIONS

all industrial applications, areas with use of driverless vehicular systems, shopping centres, railway stations, airports, exhibition halls

MATERIAL

black steel

COVERING TYPES

coating, concrete, screed, industrial coverings, natural and stone slabs

TRAFFICABILITY

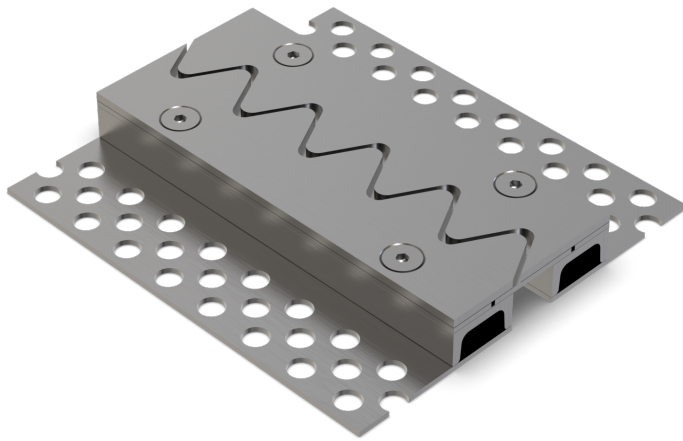
industrial trucks (lifting trucks, fork-lifts etc.), passenger cars, trucks

FORMED PARTS

corner piece, T-piece, cross piece, floor-wall connections

NOTES

Depending on the floor covering, we recommend installing a grouting seal between the joint profile and the covering to prevent the hairline crack caused by the building physics.



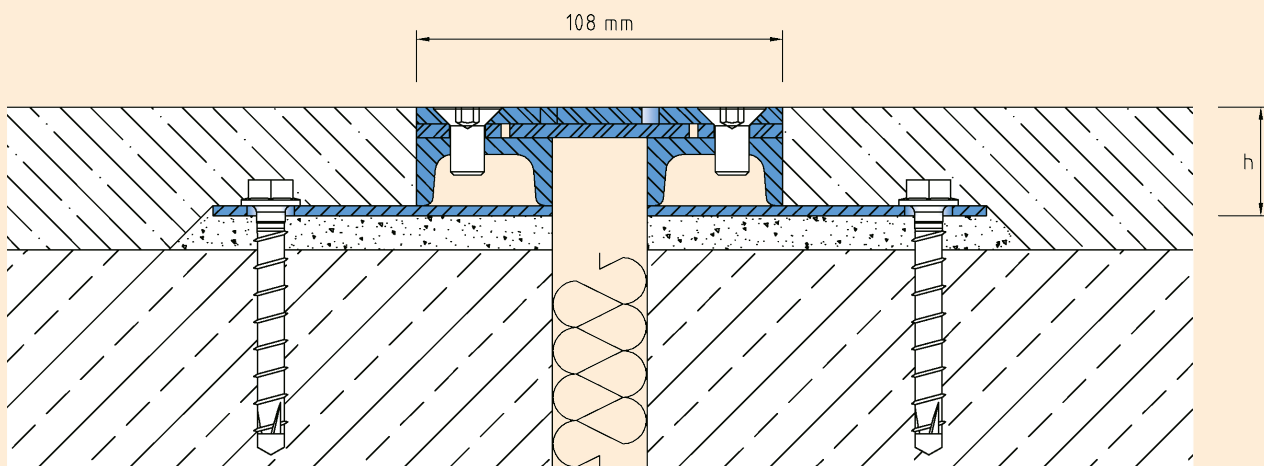
TECHNICAL DATA

Movement horizontal:	13 mm (-5/+8 mm)
Visible width:	108 mm
Maximal joint width:	30 mm
Load rating:	wheel load 5000 kg up to Ø 150 mm, B = 100 mm
Load rating trucks:	600 kN (DIN 1072)
Load rating forklifts:	150 kN (DIN 1055-3)
Supply length:	3 mtr

DESIGNS

ARTICLE NO.	PROFILE HEIGHT (h)	RECESS (BxT)
ST.6.110/32	31 mm	270 x 41 mm
ST.6.110/47	46 mm	270 x 56 mm
ST.6.110/62	61 mm	270 x 71 mm
ST.6.110/77	76 mm	270 x 86 mm
ST.6.110/92	91 mm	270 x 101 mm

Special heights on request.



ST.6.110

Subject to technical change without notice.