



PSA.8

- high load-bearing capacity
- with coating-flange

FEATURES

resistant to heavy loads, permanently tight, corrosion-resistant, high flexibility (variable heights and widths), mesh size grating in 30x10 mm (30x30 mm on request), grid lock inclusive

APPLICATIONS

parking decks, parking garages, underground garages, all industrial applications, shopping centres, railway stations, airports, exhibition halls

MATERIAL

hot-dip galvanised steel, stainless steel V2A (V4A on request)

COVERING TYPES

coating

TRAFFICABILITY

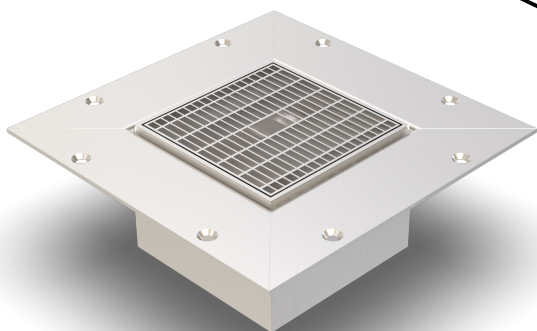
passenger cars (trucks on request)

NOTES

Connection to drain channel possible.

Bottom tray optionally available (on request).

For stainless steel, the general cleaning and care instructions must be observed (see also download area).

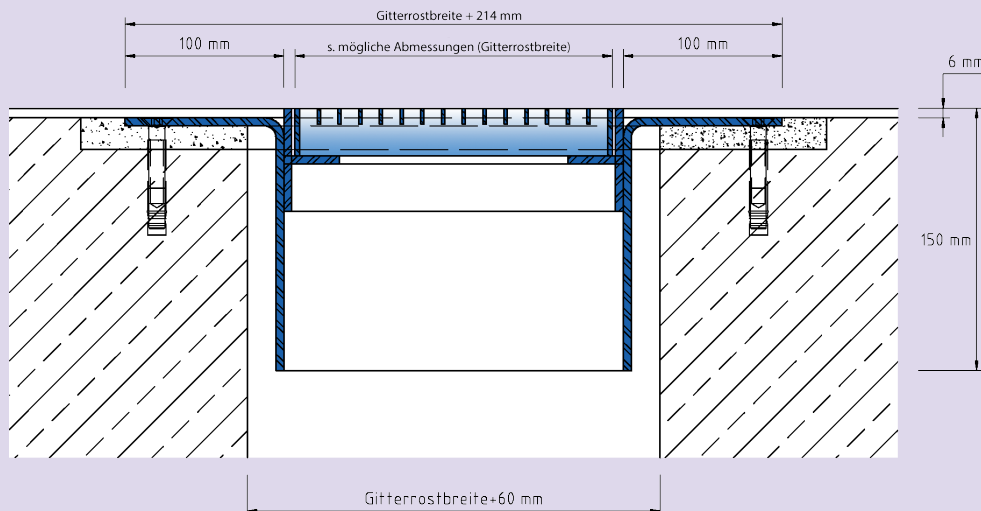


TECHNICAL DATA

Material thickness vertical base: 5 mm
Material thickness mounting bracket: 5 mm

DESIGNS

ARTICLE NO.	CHANNEL HEIGHT (h)	RECESS (BxT)
PSA.8.200-200/11	11 mm	480 x 20 mm
PSA.8.300-300/11	11 mm	580 x 20 mm
PSA.8.400-400/11	11 mm	680 x 20 mm
PSA.8.500-500/11	11 mm	780 x 20 mm
PSA.8.600-600/11	11 mm	880 x 20 mm
PSA.8.800-800/11	11 mm	1080 x 20 mm
PSA.8.1000-1000/11	11 mm	1280 x 20 mm
PSA.8.1200-1200/11	11 mm	1480 x 20 mm



PSA.8

Subject to technical change without notice.