



PSA.5

- car-trafficable

FEATURES

permanently tight, corrosion-resistant, high flexibility (variable heights and widths), mesh size grating in 30x10 mm (30x30 mm on request), grid lock inclusive

APPLICATIONS

parking decks, parking garages, underground garages, all industrial applications, shopping centres, railway stations, airports, exhibition halls

MATERIAL

hot-dip galvanised steel, stainless steel V2A (V4A on request)

COVERING TYPES

asphalt, coating, concrete, screed, industrial coverings

TRAFFICABILITY

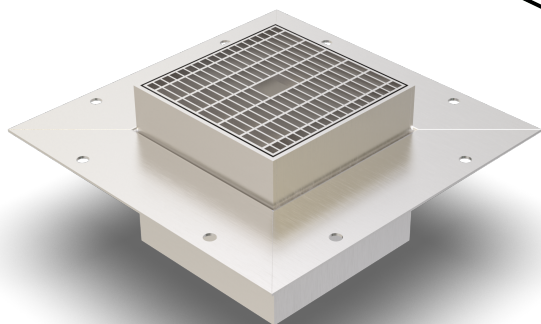
passenger cars

NOTES

Connection to drain channel possible.

Bottom tray optionally available (on request).

For stainless steel, the general cleaning and care instructions must be observed (see also download area).



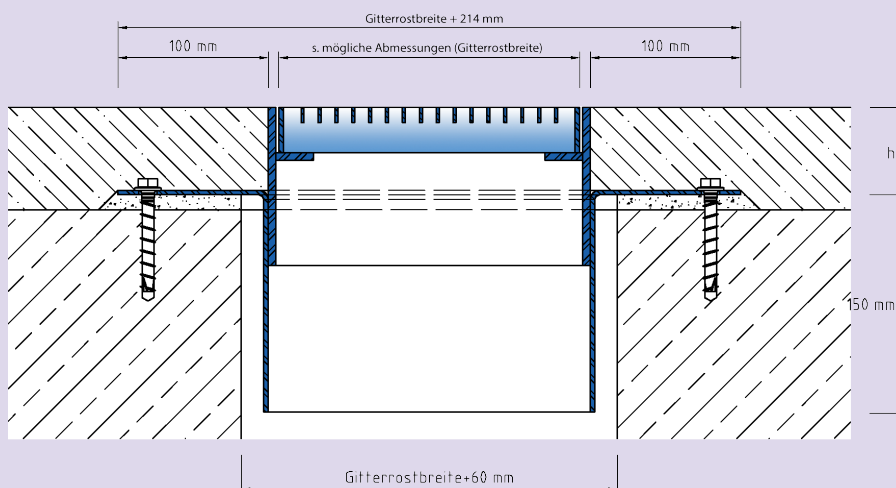
TECHNICAL DATA

Material thickness of mounting bracket: 3 mm
Material thickness vertical base: 5 mm

DESIGNS

ARTICLE NO.	CHANNEL HEIGHT (h)	ABMESSUNG
PSA.5.200-200/60	60 mm	200 x 200 mm
PSA.5.300-300/60	60 mm	300 x 300 mm
PSA.5.400-400/60	60 mm	400 x 400 mm
PSA.5.500-500/60	60 mm	500 x 500 mm
PSA.5.600-600/60	60 mm	600 x 600 mm
PSA.5.800-800/60	60 mm	800 x 800 mm
PSA.5.1000-1000/60	60 mm	1000 x 1000 mm
PSA.5.1200-1200/60	60 mm	1200 x 1200 mm

Special heights on request.



Subject to technical change without notice.

PSA.5