

PSA.4.200-200/..

- with coating-flange

FEATURES

permanently tight, corrosion-resistant, high flexibility (variable heights and widths), mesh size grating in 30x10 mm (30x30 mm on request), grid lock inclusive

APPLICATIONS

parking decks, parking garages, underground garages, all industrial applications, shopping centres, railway stations, airports, exhibition halls

MATERIAL

stainless steel V2A (V4A on request)

COVERING TYPES

coating, screed, industrial coverings

TRAFFICABILITY

passenger cars

NOTES

Connection to drain channel possible.

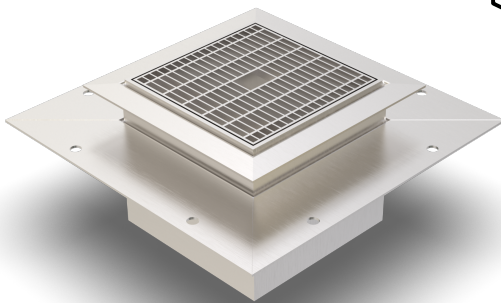
Bottom tray optionally available (on request).

For stainless steel, the general cleaning and care instructions must be observed (see also download area).

Other dimensions are available:

Item no.

- PSA.4.300-300/60
- PSA.4.400-400/60
- PSA.4.500-500/60
- PSA.4.600-600/60
- PSA.4.800-800/60
- PSA.4.1000-1000/60
- PSA.4.1200-1200/60

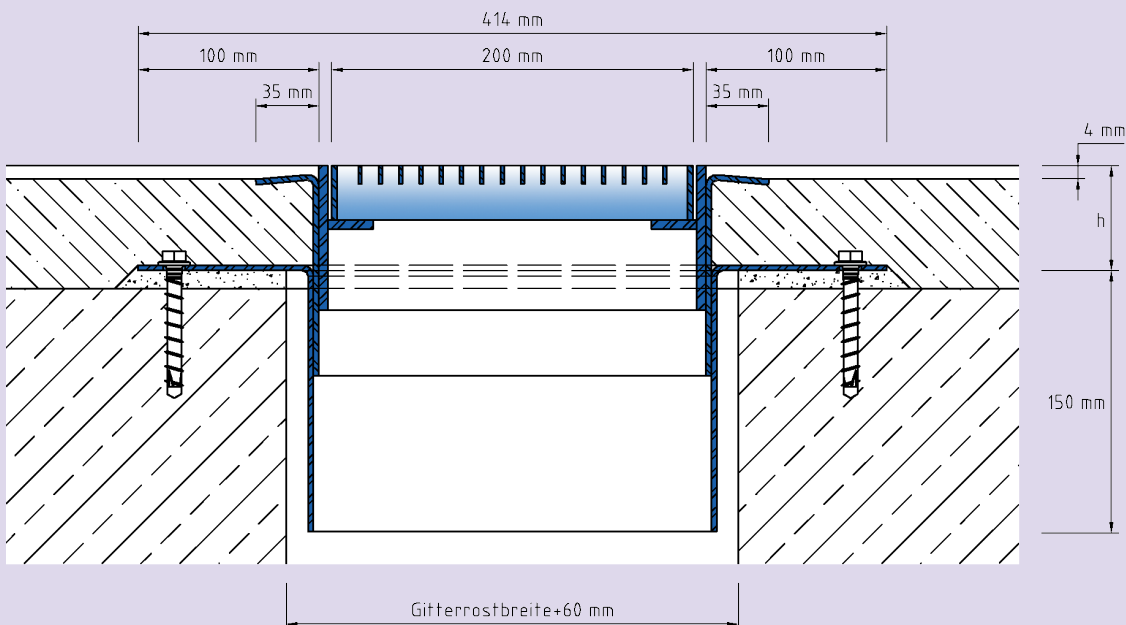


TECHNICAL DATA

Material thickness of mounting bracket: 3 mm
 Material thickness vertical base: 5 mm
 Steel grating width: 200 mm

DESIGNS

ARTICLE NO.	CHANNEL HEIGHT (h)
PSA.4.200-200/60	60 mm
Special heights on request.	



Subject to technical change without notice.

PSA.4.200-200