

PSA.1

- high load-bearing capacity
- with loose/fixed flange

FEATURES

resistant to heavy loads, permanently tight, corrosion-resistant, high flexibility (variable heights and widths), mesh size grating in 30x10 mm (30x30 mm on request), grid lock inclusive

APPLICATIONS

parking decks, parking garages, underground garages, all industrial applications, shopping centres, railway stations, airports, exhibition halls

MATERIAL

hot-dip galvanised steel, stainless steel V2A (V4A on request)

COVERING TYPES

asphalt, screed

TRAFFICABILITY

passenger cars (trucks on request)

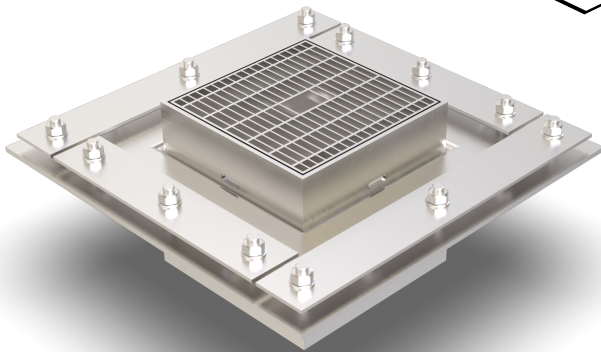
NOTES

Connection to drain channel possible.

Drainage slots are possible (on request).

Bottom tray optionally available (on request).

For stainless steel, the general cleaning and care instructions must be observed (see also download area).



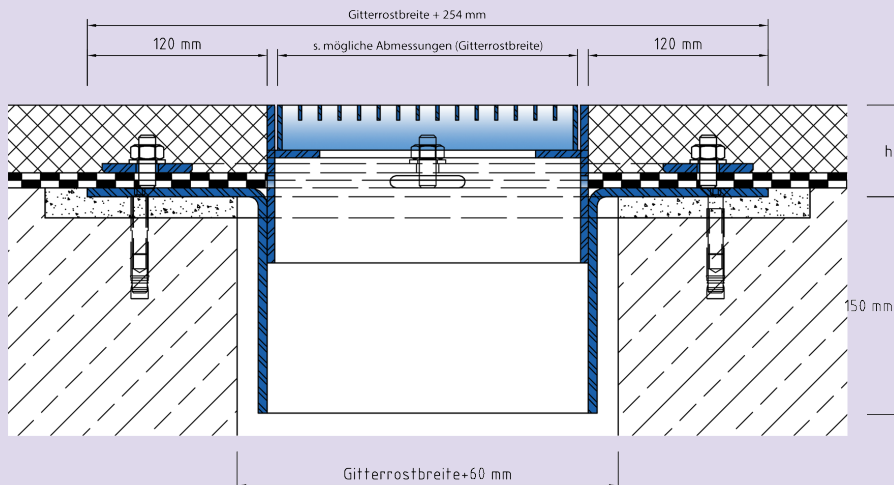
TECHNICAL DATA

Material thickness fixed flange: 6 mm
 Material thickness vertical base: 5 mm

DESIGNS

ARTICLE NO.	CHANNEL HEIGHT (h)	RECESS (BxT)
PSA.1.200-200/61	61 mm	500 x 20 mm
PSA.1.300-300/61	61 mm	600 x 20 mm
PSA.1.400-400/61	61 mm	700 x 20 mm
PSA.1.500-500/61	61 mm	800 x 20 mm
PSA.1.600-600/61	61 mm	900 x 20 mm
PSA.1.800-800/61	61 mm	1100 x 20 mm
PSA.1.1000-1000/61	61 mm	1300 x 20 mm
PSA.1.1200-1200/61	61 mm	1500 x 20 mm

Special heights on request.



PSA.1

Subject to technical change without notice.