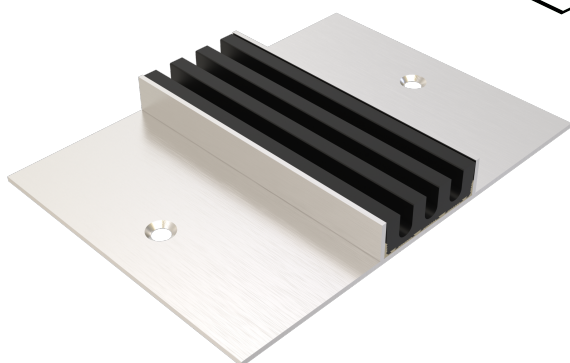




## KMR.2.100/39

- suitable for all types of covering
- high load-bearing capacity
- low installation height
- with adhering flange



### FEATURES

resistant to heavy loads, abrasion-, weather- and temperature-resistant (-40°C to +120°C), resistant to de-icing salt and waste water (alkalis, microbes, bacteria), permanently tight, corrosion-resistant

### APPLICATIONS

parking decks, parking garages, underground garages, all industrial applications, shopping centres, railway stations, airports, exhibition halls

### MATERIAL

hot-dip galvanised steel, stainless steel V2A (V4A on request), EPDM insert

### COVERING TYPES

asphalt, coating, concrete, screed, bitumen welding membrane, liquid plastic

### TRAFFICABILITY

passenger cars, trucks

### FORMED PARTS

corner piece, T-piece, cross piece, channel end piece (flange all around or upstand), channel drain

### NOTES

The individual channel elements are tightly welded together during installation on site.

EPDM insert is glued in.

For stainless steel, the general cleaning and care instructions must be observed (see also download area).

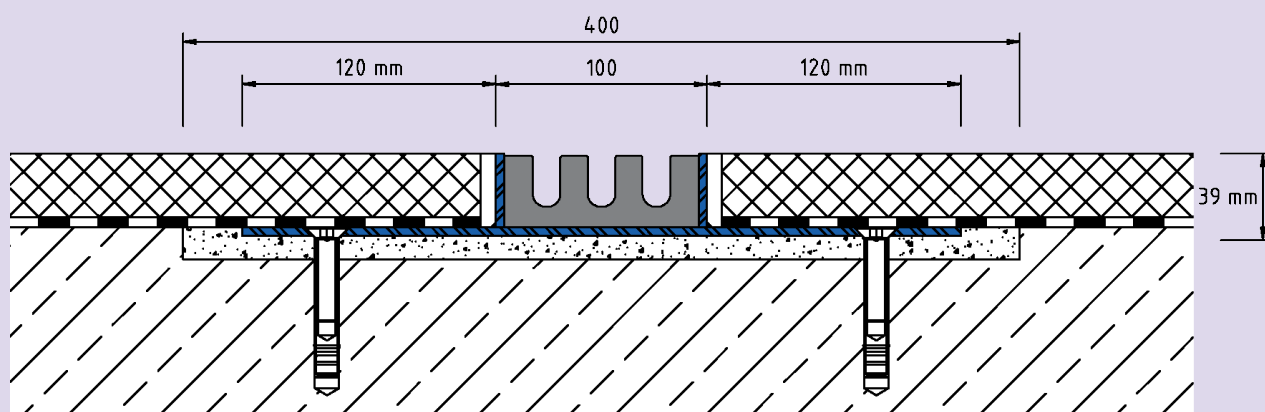
Installation by our own fitters recommended.

### TECHNICAL DATA

Material thickness channel body: 4 mm  
Supply length: 3 mtr  
Comb channel width: 100 mm

### DESIGNS

ARTICLE NO.	CHANNEL HEIGHT (h)	RECESS (BxT)
KMR.2.100/39	39 mm	400 x 20 mm



KMR.2.100

Subject to technical change without notice.