

## KDF.. WD

- cable fairlead
- insulated structure
- with loose/fixed flange

### APPLICATIONS

parking decks, parking garages, underground garages, all industrial applications, shopping centres, railway stations, airports, exhibition halls

### MATERIAL

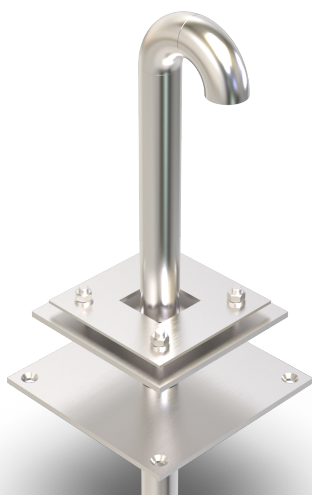
hot-dip galvanised steel, stainless steel V2A (V4A on request)

### COVERING TYPES

asphalt, concrete, screed

### NOTES

Threaded bolt M12x35 mm

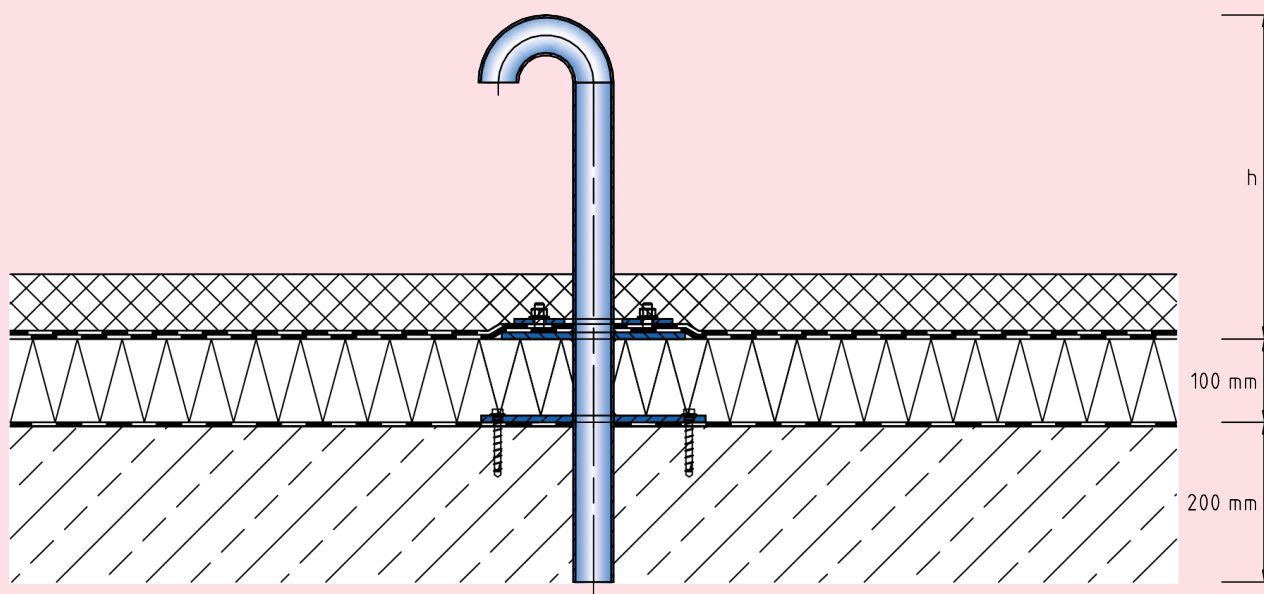


### TECHNICAL DATA

Material thickness fixed flange: 8 mm  
Material thickness loose flange: 6 mm

### DESIGNS

| ARTICLE NO. | HEIGHT (h) | PIPE Ø  |
|-------------|------------|---------|
| KDF34 WD    | 400 mm     | 33.7 mm |
| KDF48 WD    | 400 mm     | 48.3 mm |



KDF.. WD

Subject to technical change without notice.