

## CM-Messpunkt

- **flexible and unbreakable**
- **optimum grip in the insulation**
- **prevents damage to the heating pipes**
- **CM measurement according to DIN 4725**

### FEATURES

CM measuring point, the ideal and easiest way to set up a CM measuring point in the screed. The geometry and the very flexible material enable a secure hold in the insulation without tearing out or floating. It is usually installed between two heating pipes. This means that damage to the heating pipes during the CM measurement is almost impossible.

### APPLICATIONS

residential, office and administration buildings

### MATERIAL

PE (polyethylen-synthetic material)

### NOTES

Packaging unit: 100 pieces

Color: bright green

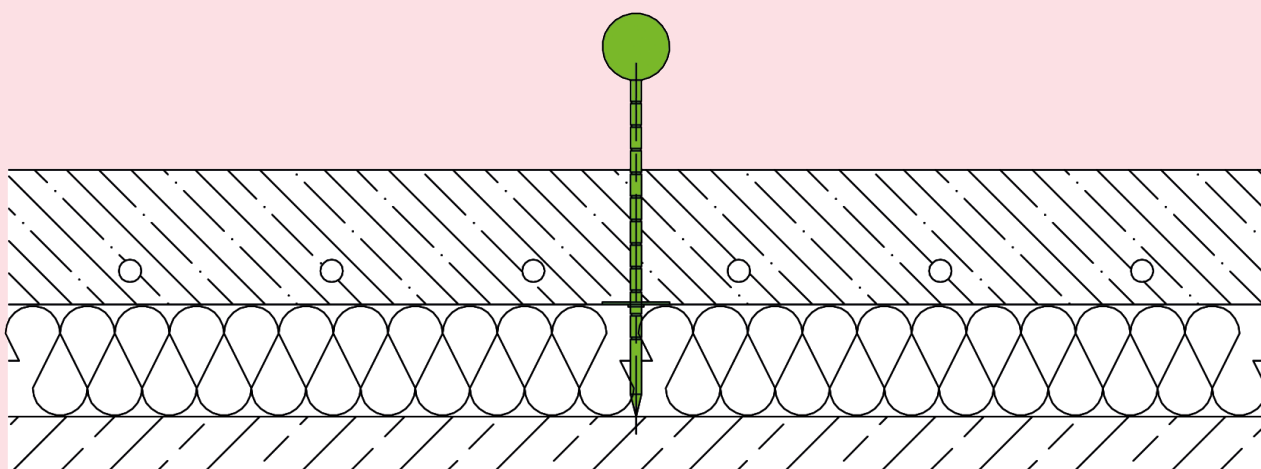
We recommend one test point for each heater circuit.

### TECHNICAL DATA

Thickness: 5 mm  
Length: 180 mm

### DESIGNS

**ARTICLE NO.**  
CM-Messpunkt



CM-Messpunkt

Subject to technical change without notice.