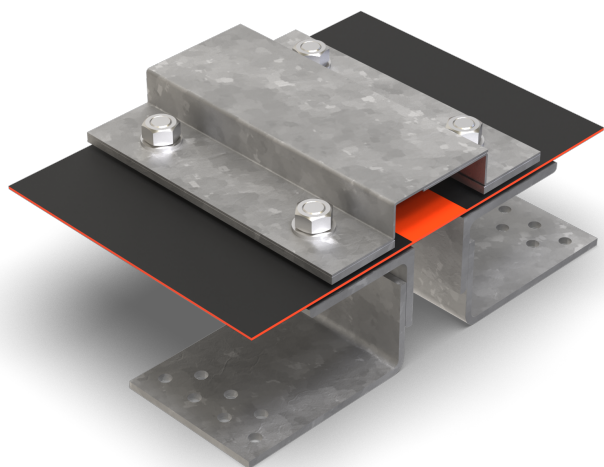




BU2500 (BF20)

- for insulated constructions
- with loose/fixed flange
- for areas covered with soil



FEATURES

watertight, weather- and temperature-resistant (-40°C to +120°C), resistant to de-icing salt and waste water (alkalis, microbes, bacteria)

APPLICATIONS

ceiling surfaces, roofs, inner courtyards

MATERIAL

hot-dip galvanised steel, (stainless steel on request), joint tape BF made of EPDM with lateral bonding flanges made of non-combustible fleece on the top and bottom sides

COVERING TYPES

asphalt, pavement, earth-covered areas, areas covered with soil, bitumen welding membrane

FORMED PARTS

corner piece, T-piece, cross piece, floor-wall connections, upstand, membrane upstand

NOTES

The joint tape is a product of the BBF ElastoFug joint tape systems. Also available with joint tape BF40 = article BU2500 (BF40):

- Horizontal joint clearance: 80 mm (± 40 mm)
- Visible width: 124 mm
- Maximum joint width: 100 mm

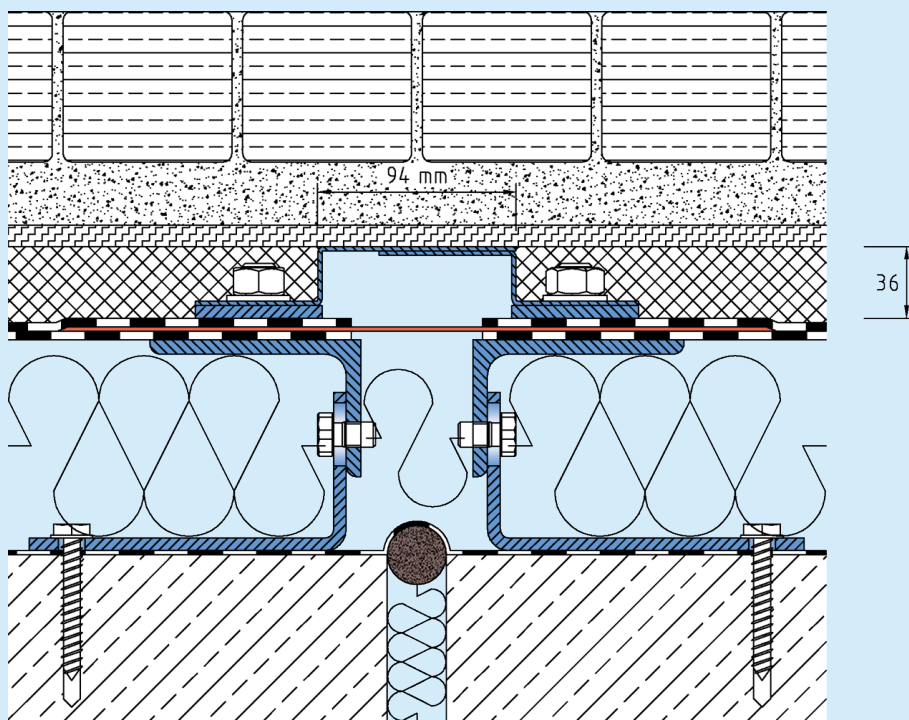
Installation by our own fitters recommended.

TECHNICAL DATA

Movement horizontal: 40 mm (± 20 mm)
Maximal joint width: 80 mm
Supply length: 3 mtr

DESIGNS

ARTICLE NO.	PROFILE HEIGHT (h)
BU2500 (BF20)	36 mm



Subject to technical change without notice.

BU2500 (BF20)