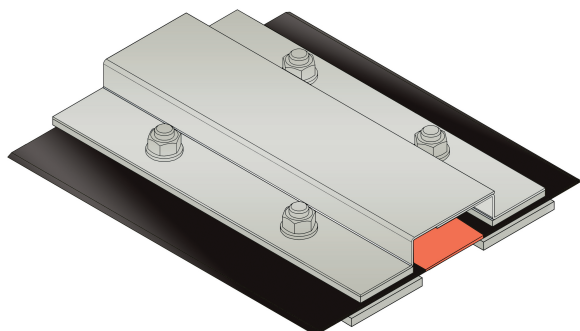




BU2000 (BF20)

- with loose/fixed flange
- sealing insert approved by the building authorities



FEATURES

watertight, weather and temperature resistant (-40°C bis +120°C), resistant to salt and waste-water (alcalics, microbes, bacteria)

APPLICATIONS

Ceiling surfaces, roofs, courtyards

MATERIAL

hot-dip galvanised steel, (high-grade steel on request), joint tape (EPDM)

COVERING TYPES

asphalt, Pavement, green roof coverings

FORMED PARTS

upstand, membrane upstand, corner piece, T piece, cross piece, transition floor to wall

NOTES

Waterproof joint profile with loose and fixed flange according to DIN 18195.

This joint profile is also available for a bigger movement.

The joint tape is a product of BBF ElastoFug joint tape systems.

Also available for insulated constructions.

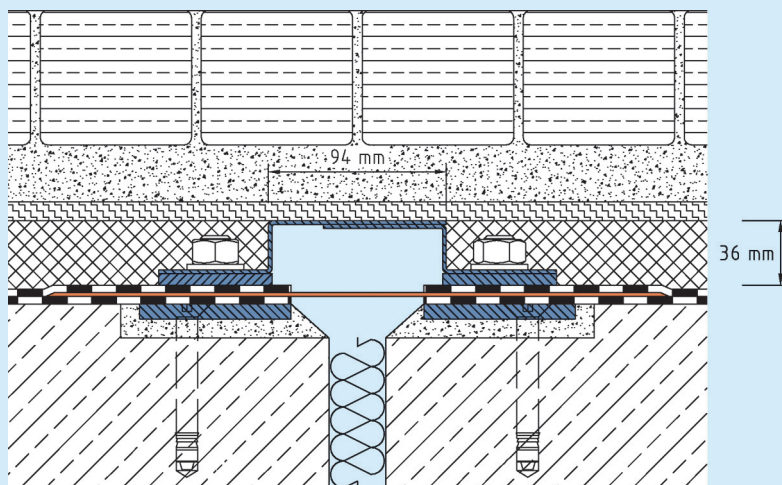
Our engineers and technicians can be of assistance during installation on request.

Technical data

Movement horizontal:	40 mm (±20 mm)
Maximal joint width:	40 mm
Supply length:	3 mtr

Designs

Article No.	Profile height (h)	Recess (WxD)
BU2000 (BF20)	36 mm	300 x 20 mm



BU2000 (BF20)

Subject to technical change without notice.