



BU2000 (BF20)

- für erdüberschüttete Bereiche
- with loose/fixed flange

FEATURES

watertight, weather- and temperature-resistant (-40°C to +120°C), resistant to de-icing salt and waste water (alkalis, microbes, bacteria)

APPLICATIONS

ceiling surfaces, roofs, inner courtyards

MATERIAL

hot-dip galvanised steel, (stainless steel on request), joint tape BF20 made of EPDM with lateral bonding flanges made of non-combustible fleece on the top and bottom sides

COVERING TYPES

asphalt, pavement, earth-covered areas, erdüberschüttete Bereiche, bitumen welding membrane, liquid plastic

FORMED PARTS

corner piece, T-piece, cross piece, floor-wall connections, upstand, membrane upstand

NOTES

The joint tape is a product of the BBF ElastoFug joint tape systems. Also available for insulated constructions.

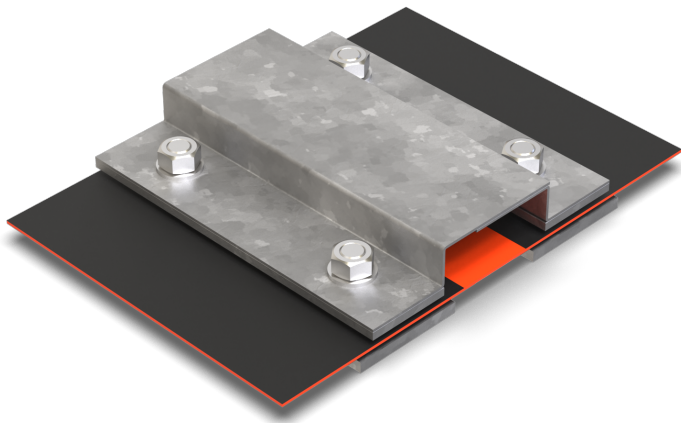
Also available with joint tape BF40 = article BU2000 (BF40):

- Horizontal joint clearance: 80 mm (±40 mm)

- Visible width: 124 mm

- Maximum joint width: 70 mm

Installation by our own fitters recommended.

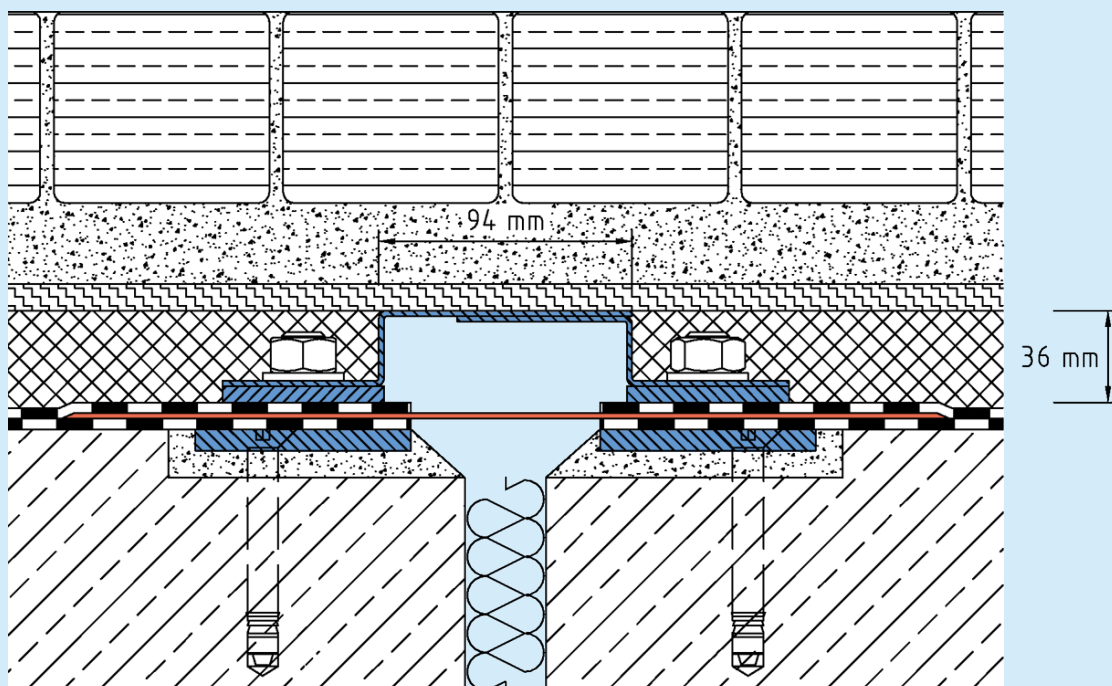


TECHNICAL DATA

Movement horizontal: 40 mm (±20 mm)
 Visible width: 94 mm
 Maximal joint width: 40 mm
 Supply length: 3 mtr

DESIGNS

ARTICLE NO.	PROFILE HEIGHT (h)	RECESS (BxT)
BU2000 (BF20)	36 mm	300 x 20 mm



BU2000 (BF20)

Subject to technical change without notice.