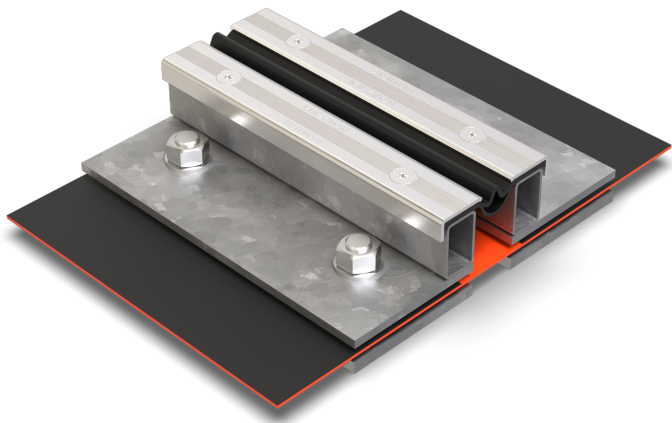




BBF95/..

- high load-bearing capacity
- anti-slip structured visible surface
- with loose/fixed flange



FEATURES

watertight, resistant to heavy loads, trafficable by fork-lift trucks, expansion insert can be replaced anytime, abrasion-, weather- and temperature-resistant (-40°C to +120°C), resistant to de-icing salt and waste water (alkalis, microbes, bacteria)

APPLICATIONS

parking decks, parking garages, underground garages, ramp crossings, pedestrian bridges, all industrial applications

MATERIAL

substructure hot-dip galvanised steel and visible surface stainless steel V2A (V4A on request), EPDM expansion insert, joint tape BF20 made of EPDM with lateral bonding flanges made of non-combustible fleece on the top and bottom sides

COVERING TYPES

asphalt, concrete, screed, bitumen welding membrane, liquid plastic

TRAFFICABILITY

passenger cars, trucks, fork-lifts

FORMED PARTS

corner piece, T-piece, cross piece, floor-wall connections, upstand, membrane upstand

NOTES

Specification of profile height (h) from the lower edge of the loose flange.

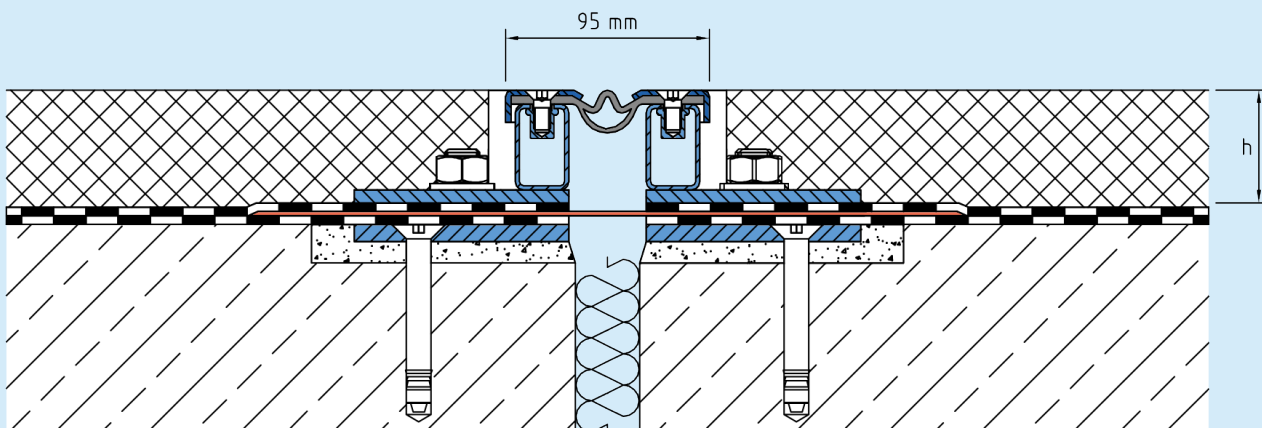
The joint tape is a product of the BBF ElastoFug joint tape systems. Installation by our own fitters recommended.

TECHNICAL DATA

Movement horizontal:	40 mm (±20 mm)
Movement vertical:	20 mm (±10 mm)
Visible width:	95 mm
Maximal joint width:	60 mm
Load rating:	wheel load 4500 kg up to Ø 150 mm, B = 100 mm
Load rating trucks:	600 kN (DIN 1072)
Load rating forklifts:	150 kN (DIN 1055-3)
Supply length:	3 mtr
Color of expansion insert:	schwarz

DESIGNS

ARTICLE NO.	PROFILE HEIGHT (h)	RECESS (BxT)
BBF95/37	37 mm	290 x 20 mm
BBF95/42	42 mm	290 x 20 mm
BBF95/52	52 mm	290 x 20 mm
BBF95/62	62 mm	290 x 20 mm
BBF95/92	92 mm	290 x 20 mm



BBF95

Subject to technical change without notice.