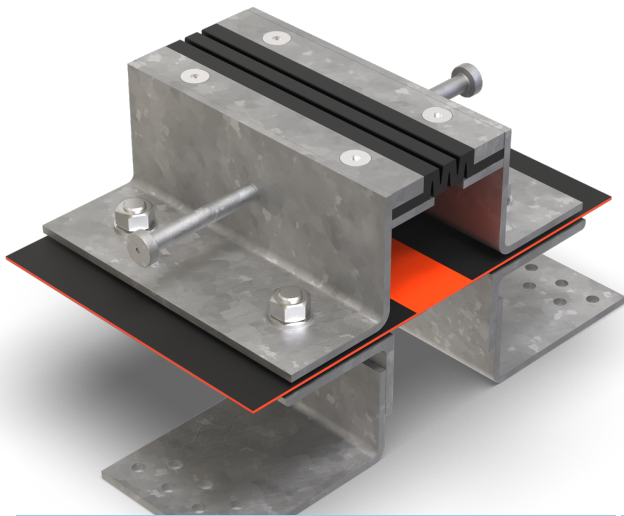




BBF124/.. WD

- high load-bearing capacity
- for insulated constructions
- with loose/fixed flange



FEATURES

watertight, resistant to heavy loads, trafficable by fork-lift trucks, expansion insert can be replaced in the event of damage without damaging the adjacent covering, abrasion-, weather- and temperature-resistant (-40°C to +120°C), resistant to de-icing salt and waste water (alkalis, microbes, bacteria)

APPLICATIONS

parking decks, parking garages, underground garages, ramp crossings, pedestrian bridges, all industrial applications

MATERIAL

hot-dip galvanised steel, (stainless steel on request), EPDM expansion insert, joint tape BF20 made of EPDM with lateral bonding flanges made of non-combustible fleece on the top and bottom sides

COVERING TYPES

asphalt, concrete, screed, bitumen welding membrane, liquid plastic

TRAFFICABILITY

passenger cars, trucks, fork-lifts

FORMED PARTS

corner piece, T-piece, cross piece, floor-wall connections, upstand, membrane upstand

NOTES

Specification of profile height (h) from the lower edge of the loose flange.

The joint tape is a product of the BBF ElastoFug joint tape systems. Installation by our own fitters recommended.

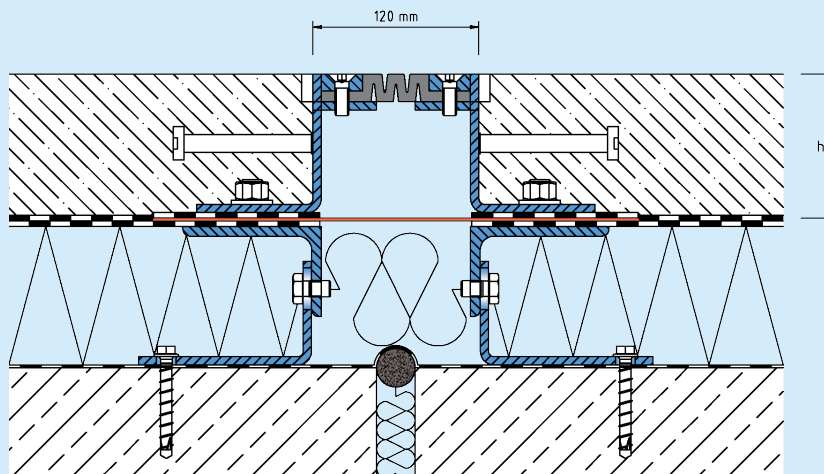
TECHNICAL DATA

Movement horizontal:	35 mm (-15/+20 mm)
Movement vertical:	20 mm (±10 mm)
Visible width:	120 mm
Maximal joint width:	80 mm
Load rating:	wheel load 5000 kg up to Ø 150 mm, B = 100 mm
Load rating trucks:	300 kN (DIN 1072)
Load rating forklifts:	70 kN (DIN 1055-3)
Supply length:	3 mtr
Color of expansion insert:	schwarz

DESIGNS

ARTICLE NO.	PROFILE HEIGHT (h)
BBF124/100 WD	100 mm
BBF124/120 WD	120 mm
BBF124/150 WD	150 mm

Special heights on request.



BBF124

Subject to technical change without notice.