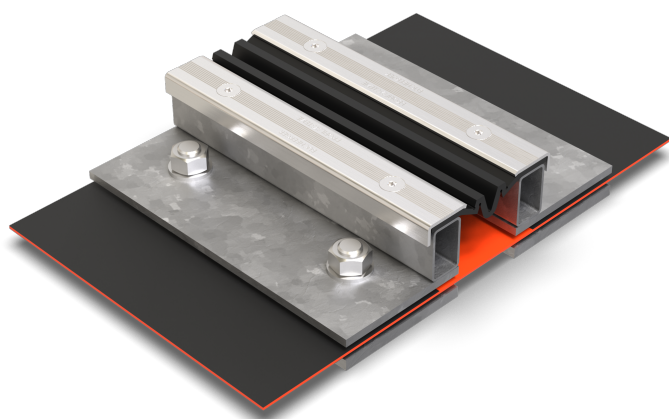




## BBF115/..

- **high load-bearing capacity**
- **anti-slip structured visible surface**
- **with loose/fixed flange**



### FEATURES

watertight, resistant to heavy loads, trafficable by fork-lift trucks, expansion insert can be replaced anytime, abrasion-, weather- and temperature-resistant (-40°C to +120°C), resistant to de-icing salt and waste water (alkalis, microbes, bacteria)

### APPLICATIONS

parking decks, parking garages, underground garages, ramp crossings, pedestrian bridges, all industrial applications

### MATERIAL

substructure hot-dip galvanised steel and visible surface stainless steel V2A (V4A on request), EPDM expansion insert, joint tape BF made of EPDM with lateral bonding flanges made of non-combustible fleece on the top and bottom sides

### COVERING TYPES

asphalt, concrete, screed, bitumen welding membrane

### TRAFFICABILITY

passenger cars, trucks, fork-lifts

### FORMED PARTS

corner piece, T-piece, cross piece, floor-wall connections, upstand, membrane upstand

### NOTES

Specification of profile height (h) from the lower edge of the loose flange.

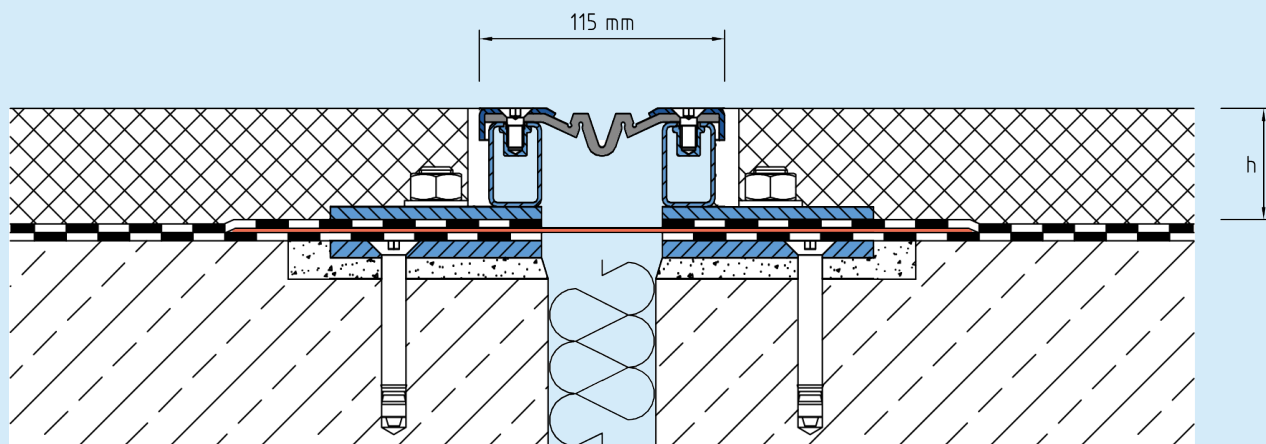
The joint tape is a product of the BBF ElastoFug joint tape systems. Installation by our own fitters recommended.

### TECHNICAL DATA

Movement horizontal:	60 mm (-25/+35 mm)
Movement vertical:	30 mm (±15 mm)
Visible width:	115 mm
Maximal joint width:	80 mm
Load rating:	wheel load 3500 kg up to Ø 150 mm, B = 100 mm
Load rating trucks:	600 kN (DIN 1072)
Load rating forklifts:	150 kN (DIN 1055-3)
Supply length:	3 mtr
Color of expansion insert:	schwarz

### DESIGNS

ARTICLE NO.	PROFILE HEIGHT (h)	RECESS (BxT)
BBF115/37	37 mm	310 x 20 mm
BBF115/42	42 mm	310 x 20 mm
BBF115/52	52 mm	310 x 20 mm
BBF115/62	62 mm	310 x 20 mm
BBF115/92	92 mm	310 x 20 mm



BBF115

Subject to technical change without notice.