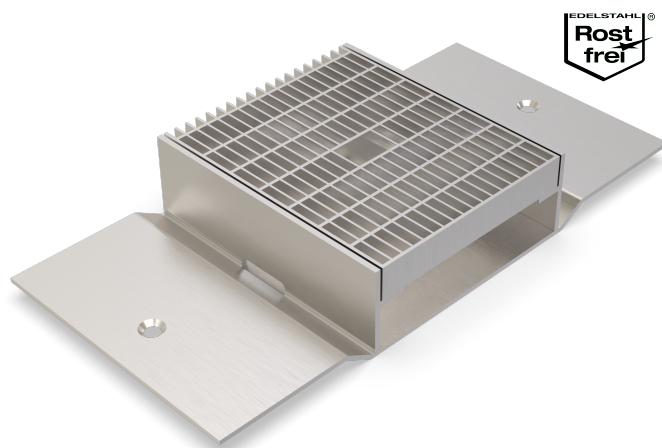




## ALR.9.200/..

- suitable for all types of covering
- high load-bearing capacity
- with adhering flange



### FEATURES

resistant to heavy loads, permanently tight, corrosion-resistant, high flexibility (variable lengths, heights and widths), high edge protection due to steel edges  $t=6$  mm, grating with mesh size  $30 \times 10$  mm ( $30 \times 30$  mm on request), grid lock inclusive

### APPLICATIONS

parking decks, parking garages, underground garages, all industrial applications, shopping centres, railway stations, airports, exhibition halls

### MATERIAL

hot-dip galvanised steel, stainless steel V2A (V4A on request)

### COVERING TYPES

asphalt, concrete, screed, bitumen welding membrane, liquid plastic

### TRAFFICABILITY

passenger cars (trucks on request)

### FORMED PARTS

corner piece, T-piece, cross piece, channel end piece (flange all around or upstand), channel drain

### NOTES

The individual channel elements are tightly welded together during installation on site.

For stainless steel, the general cleaning and care instructions must be observed (see also download area).

Installation by our own fitters recommended.

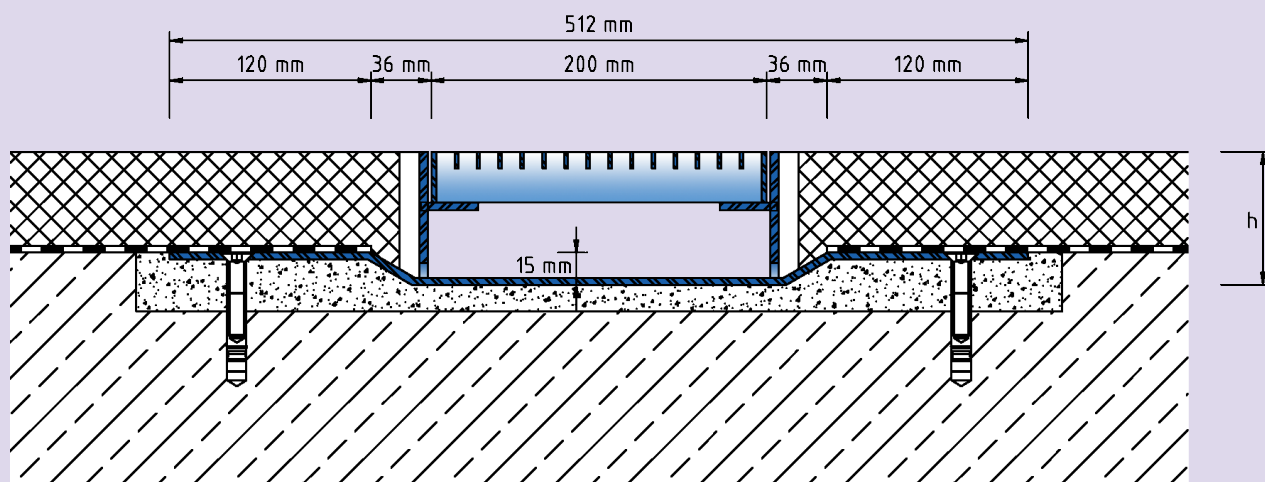
### TECHNICAL DATA

|                                     |        |
|-------------------------------------|--------|
| Material thickness adhering flange: | 4 mm   |
| Material thickness vertical base:   | 5 mm   |
| Supply length:                      | 3 mtr  |
| Steel grating width:                | 200 mm |

### DESIGNS

| ARTICLE NO.  | CHANNEL HEIGHT (h) | RECESS (BxT) |
|--------------|--------------------|--------------|
| ALR.9.200/79 | 79 mm              | 570 x 40 mm  |
| ALR.9.200/99 | 99 mm              | 570 x 40 mm  |

Special heights on request.



ALR.9.200

Subject to technical change without notice.