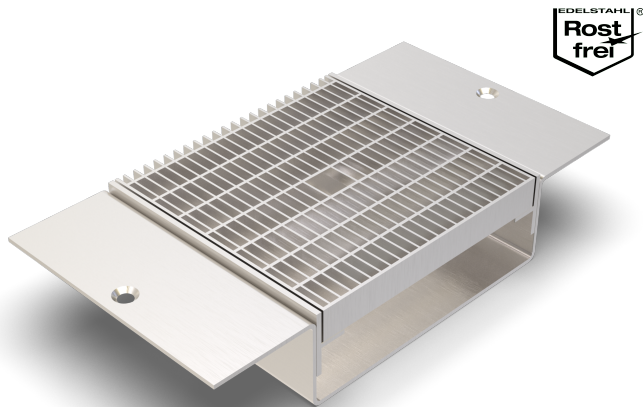


ALR.8.250/..

- high load-bearing capacity
- with coating-flange



FEATURES

permanently tight, corrosion-resistant, high flexibility (variable lengths, heights and widths), mesh size grating in 30x10 mm (30x30 mm on request)

APPLICATIONS

parking decks, parking garages, underground garages, all industrial applications, shopping centres, railway stations, airports, exhibition halls

MATERIAL

hot-dip galvanised steel, stainless steel V2A (V4A on request)

COVERING TYPES

coating

TRAFFICABILITY

passenger cars (trucks on request)

FORMED PARTS

channel end piece (flange all around or upstand), corner piece, T-piece, cross piece, channel drain, 2-fold locking per grating

NOTES

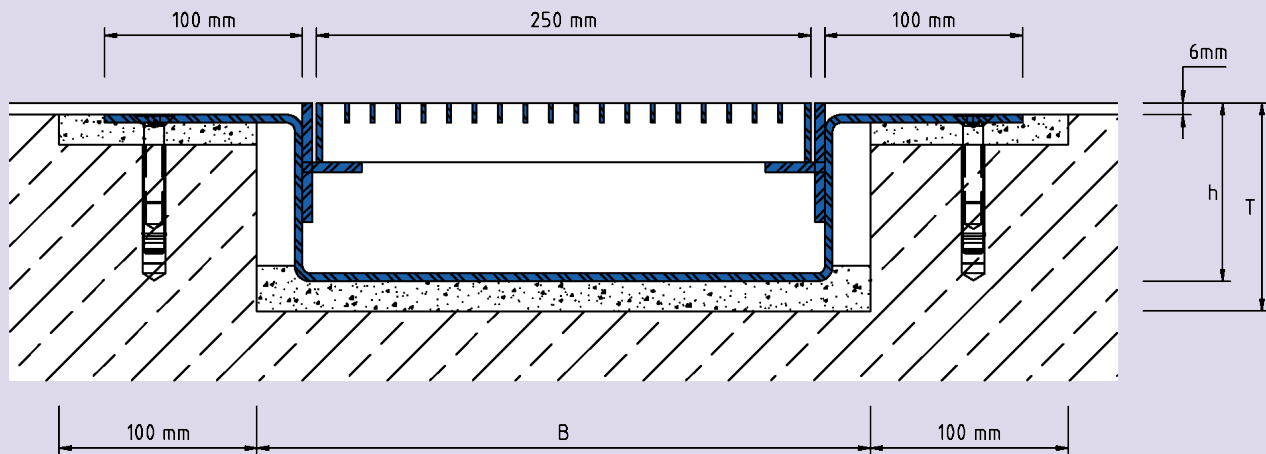
The individual channel elements are tightly welded together during installation on site.
 For stainless steel, the general cleaning and care instructions must be observed (see also download area).
 Installation by our own fitters recommended.

TECHNICAL DATA

Material thickness channel body:	4 mm
Material thickness mounting bracket:	5 mm
Supply length:	3 mtr
Steel grating width:	250 mm

DESIGNS

ARTICLE NO.	CHANNEL HEIGHT (h)	RECESS (BxT)
ALR.8.250/50	50 mm	310 x 65 mm
ALR.8.250/60	60 mm	310 x 75 mm
ALR.8.250/90	90 mm	310 x 105 mm
ALR.8.250/120	120 mm	310 x 135 mm
ALR.8.250/150	150 mm	310 x 165 mm
ALR.8.250/180	180 mm	310 x 195 mm



ALR.8.250

Subject to technical change without notice.