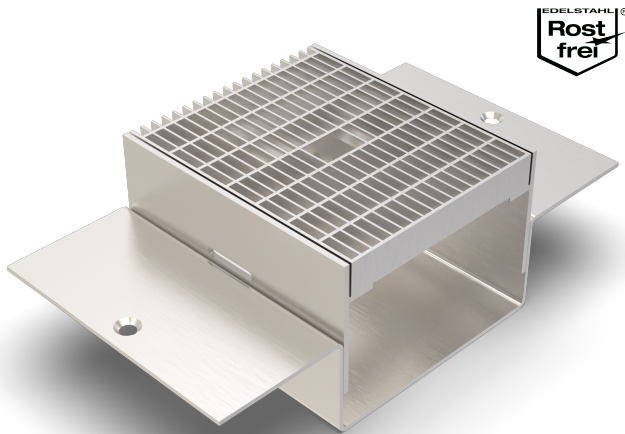


# ALR.7.200/..

- high load-bearing capacity
- with adhering flange



## FEATURES

resistant to heavy loads, permanently tight, corrosion-resistant, high flexibility (variable lengths, heights and widths), mesh size grating in 30x10 mm (30x30 mm on request)

## APPLICATIONS

parking decks, parking garages, underground garages, all industrial applications, shopping centres, railway stations, airports, exhibition halls

## MATERIAL

hot-dip galvanised steel, stainless steel V2A (V4A on request)

## COVERING TYPES

asphalt, screed

## TRAFFICABILITY

passenger cars (trucks on request)

## FORMED PARTS

channel end piece (flange all around or upstand), corner piece, T-piece, cross piece, channel drain, 2-fold locking per grating

## NOTES

The individual channel elements are tightly welded together during installation on site.  
 Recess channel body from top fixed flange min. 50 mm to max. 160 mm available.  
 Drainage slots are possible (on request).  
 For stainless steel, the general cleaning and care instructions must be observed (see also download area).  
 Installation by our own fitters recommended.

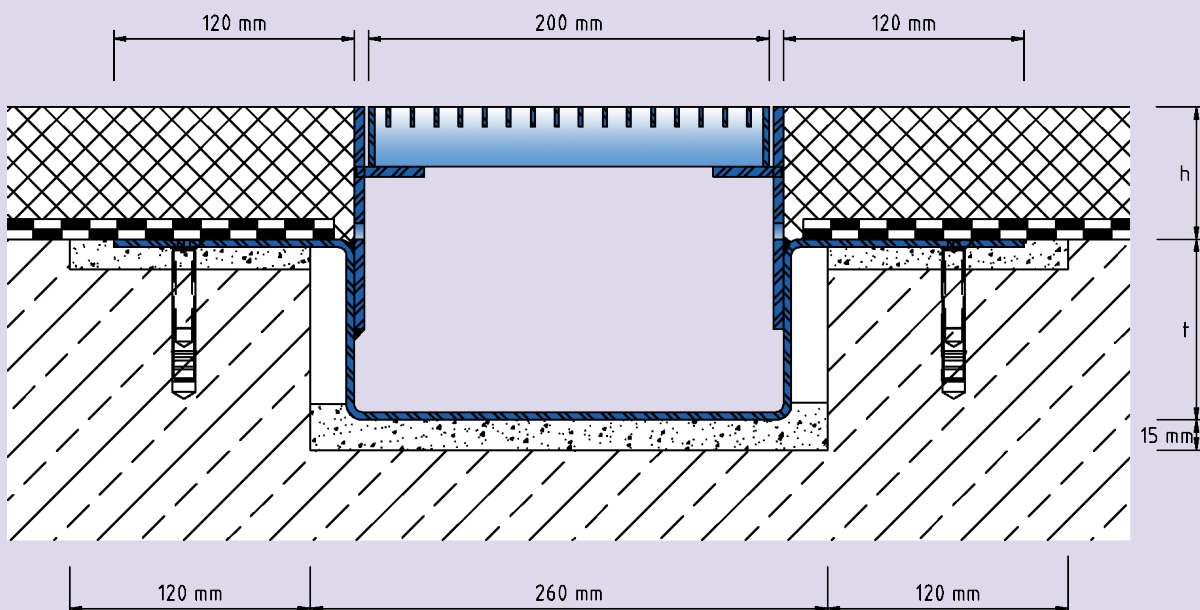
## TECHNICAL DATA

Material thickness adhering flange: 4 mm  
 Material thickness vertical base: 5 mm  
 Supply length: 3 mtr  
 Steel grating width: 200 mm

## DESIGNS

ARTICLE NO.	CHANNEL HEIGHT (h)
ALR.7.200/51	51 mm
ALR.7.200/66	66 mm
ALR.7.200/86	86 mm

Special heights on request.



ALR.7.200

Subject to technical change without notice.