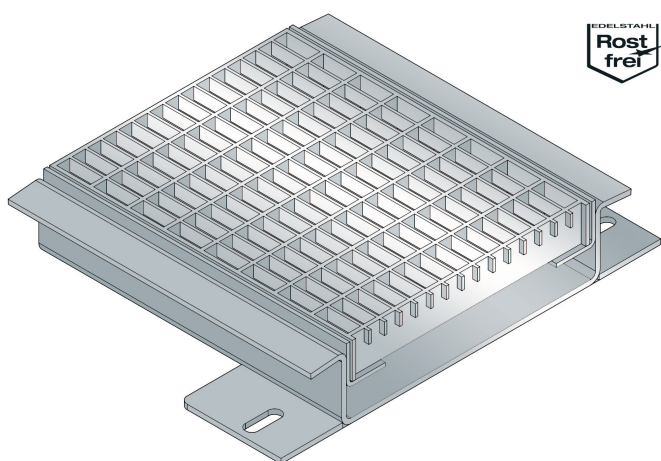




ALR.4.250/..

- car-trafficable
- with coating-flange



FEATURES

durable leak-proof, noncorrosive, high flexibility (variable lengths, heights and widths), mesh size of the steel grating in 30X10 mm or 30x30 mm possible

APPLICATIONS

outdoor, multi-storey and underground park decks, all industrial applications, shopping centres, railway stations, airports, exhibition halls

MATERIAL

high-grade steel V4A (on request)

COVERING TYPES

coating, screed, industrial covering

TRAFFICABILITY

passenger car

FORMED PARTS

gutter end piece (flange all around or upstand), corner piece, T piece, cross piece, gutter drain, 2 lock per grid

NOTES

A leak-proof welding of several gutter-parts happens in the course of installing at the building site.

For stainless steel gutters, the general cleaning and care instructions must be observed (see also www.buprofile.de - Download section).

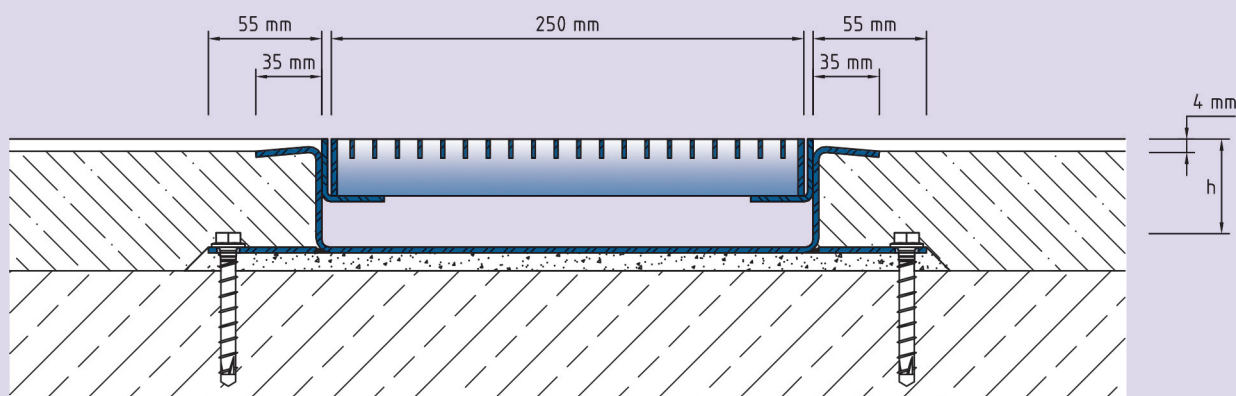
Our engineers and technicians can be of assistance during installation on request.

Technical data

Material/sheet thickness: 3 mm
Supply length: 3 mtr
Steel grating width: 250 mm

Designs

Article No.	Gutter Height (h)	Recess(WxD)
ALR.4.250/60	60 mm	410 x 70 mm
ALR.4.250/80	80 mm	410 x 90 mm
Special heights on request.		



ALR.4.250

Subject to technical change without notice.