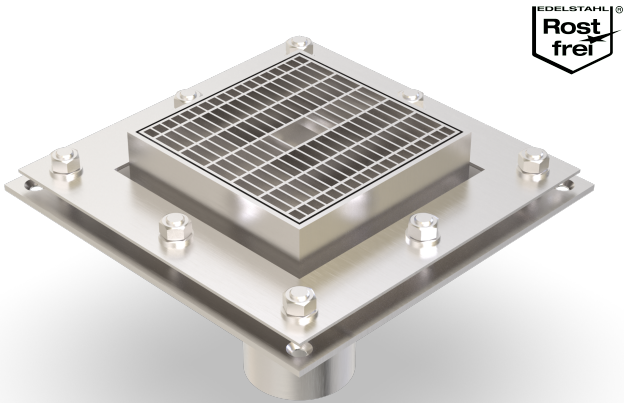


# ALK.1.200/..

- high load-bearing capacity
- with loose/fixed flange



## FEATURES

resistant to heavy loads, permanently tight, corrosion-resistant, high flexibility (variable heights and widths), grating with mesh size 30x10 mm (30x30 mm on request), grid lock inclusive, drain pipe DN100, length 200 mm

## APPLICATIONS

parking decks, parking garages, underground garages, all industrial applications, shopping centres, railway stations, airports, exhibition halls

## MATERIAL

hot-dip galvanised steel, stainless steel V2A (V4A on request)

## COVERING TYPES

asphalt, screed

## TRAFFICABILITY

passenger cars (trucks on request)

## NOTES

Drainage slots are possible (on request).

For stainless steel, the general cleaning and care instructions must be observed (see also download area).

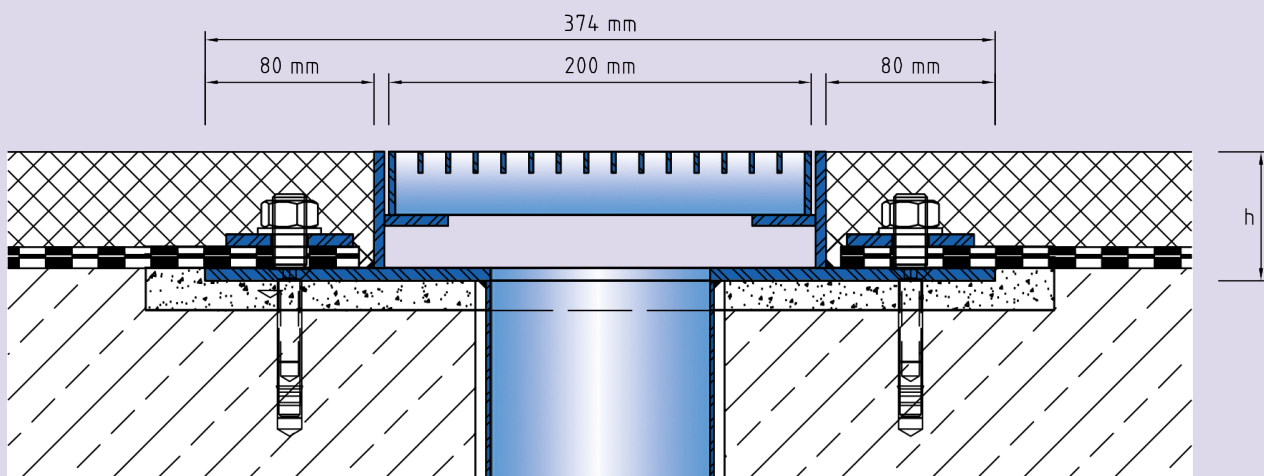
## TECHNICAL DATA

Material thickness fixed flange: 6 mm  
 Material thickness vertical base: 5 mm  
 Steel grating width: 200 mm

## DESIGNS

ARTICLE NO.	CHANNEL HEIGHT (h)	RECESS (BxT)
ALK.1.200/61	61 mm	400 x 20 mm
ALK.1.200/81	81 mm	400 x 20 mm

Special heights on request.



ALK.1.200

Subject to technical change without notice.