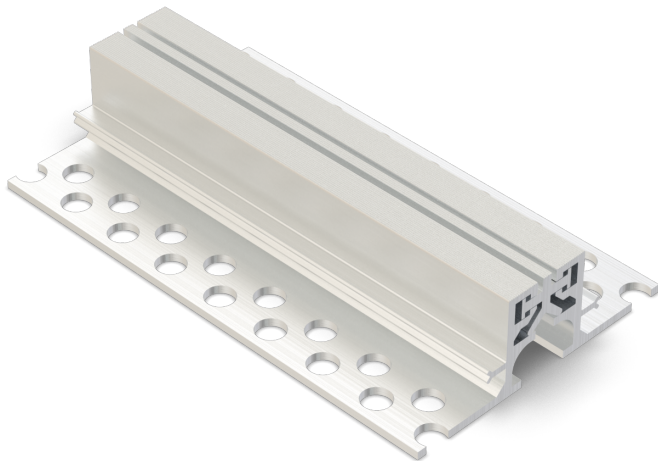




AL.5.45/..

- for medium loads
- three-dimensional absorption of movements
- anti-slip surface
- solid full-aluminium structure



FEATURES

resistant to heavy loads, trafficable by fork-lift trucks, perforated bearing legs guarantee the best connection to the substrate/covering

APPLICATIONS

all industrial applications, shopping centres, railway stations, airports, exhibition halls

MATERIAL

aluminium

COVERING TYPES

coating, concrete, screed, industrial coverings, natural and stone slabs

TRAFFICABILITY

industrial trucks (lifting trucks, fork-lifts etc.), passenger cars, trucks

FORMED PARTS

corner piece, T-piece, cross piece

NOTES

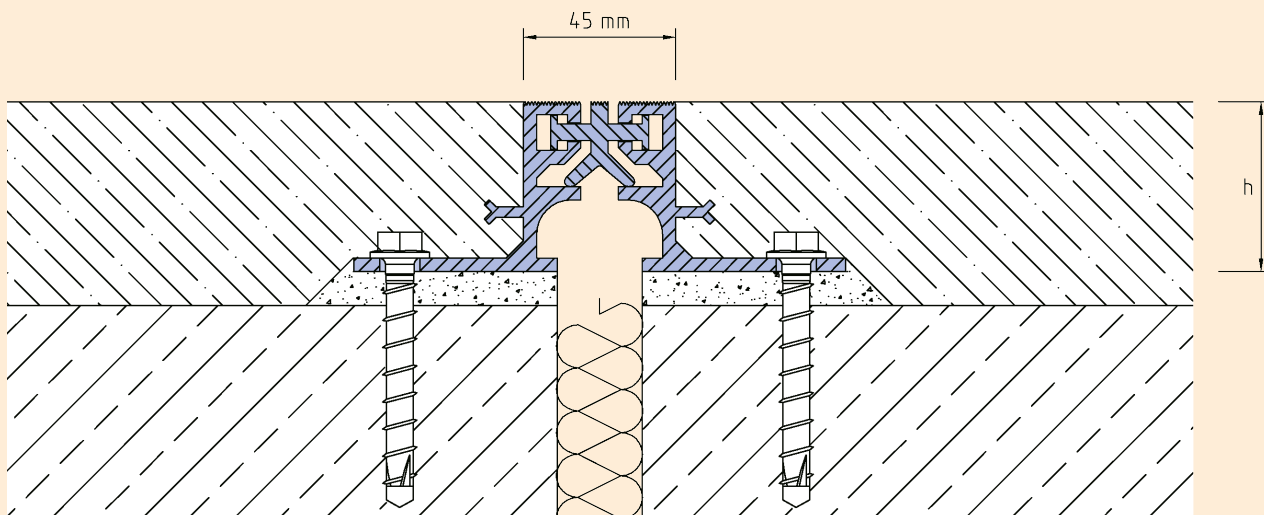
Depending on the floor covering, we recommend installing a grouting seal between the joint profile and the covering to prevent the hairline crack caused by the building physics.

TECHNICAL DATA

Movement horizontal:	10 mm (±5 mm)
Movement vertical:	6 mm (±3 mm)
Visible width:	45 mm
Maximal joint width:	35 mm
Load rating:	wheel load 1500 kg up to Ø 150 mm, B = 100 mm
Load rating trucks:	600 kN (DIN 1072)
Load rating forklifts:	100 kN (DIN 1055-3)
Supply length:	3 mtr

DESIGNS

ARTICLE NO.	PROFILE HEIGHT (h)	RECESS (BxT)
AL.5.45/35	35 mm	200 x 45 mm
AL.5.45/50	50 mm	200 x 60 mm



AL.5.45

Subject to technical change without notice.