



AL.5.210/..

- for normal loads
- three-dimensional absorption of movements
- anti-slip surface

FEATURES

resistant to heavy loads, trafficable by fork-lift trucks, perforated bearing legs guarantee the best connection to the substrate/covering

APPLICATIONS

all industrial applications, shopping centres, railway stations, airports, exhibition halls

MATERIAL

substructure hot-dip galvanised steel and visible surface aluminium

COVERING TYPES

coating, concrete, screed, industrial coverings, natural and stone slabs

TRAFFICABILITY

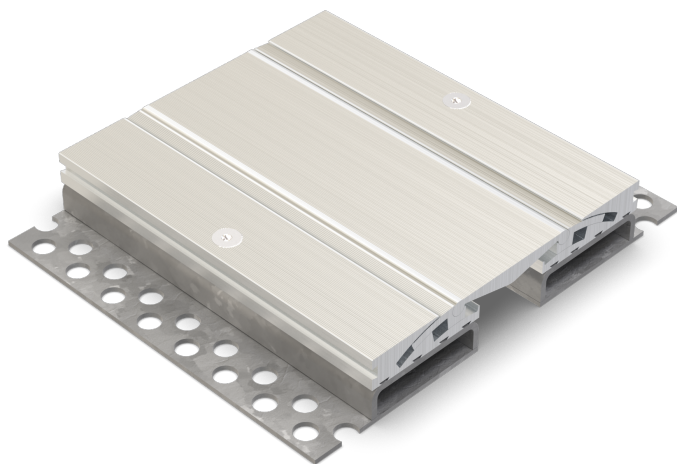
industrial trucks (lifting trucks, fork-lifts etc.), passenger cars, trucks

FORMED PARTS

corner piece, T-piece, cross piece

NOTES

Depending on the floor covering, we recommend installing a grouting seal between the joint profile and the covering to prevent the hairline crack caused by the building physics.



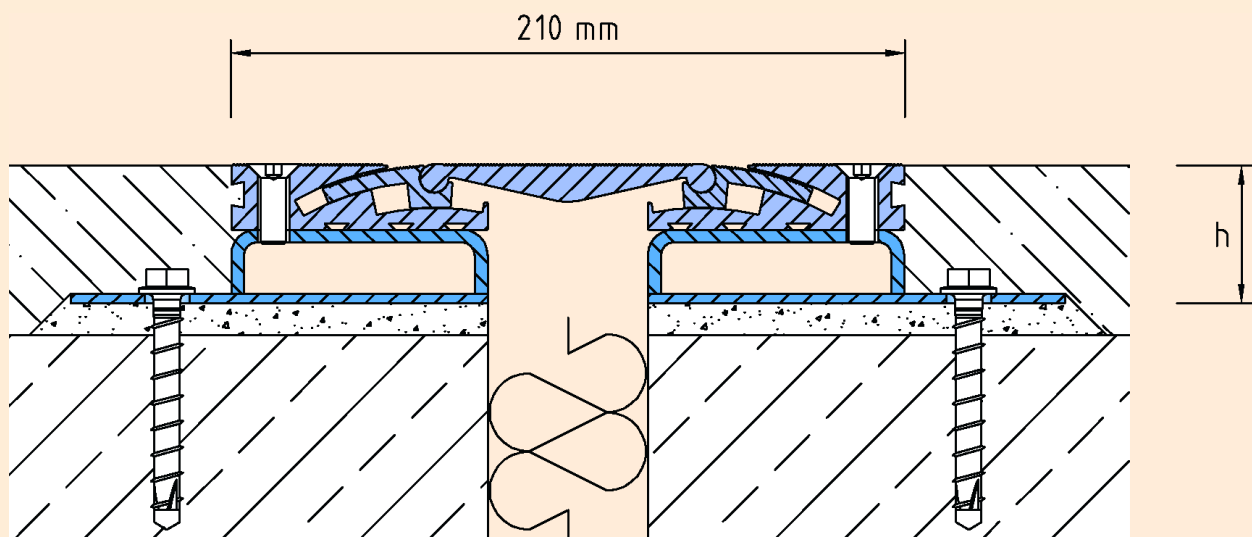
TECHNICAL DATA

Movement horizontal:	30 mm (-10/+20 mm)
Movement vertical:	10 mm (±5 mm)
Visible width:	210 mm
Maximal joint width:	50 mm
Load rating:	wheel load 1000 kg up to Ø 150 mm, B = 100 mm
Load rating trucks:	300 kN (DIN 1072)
Load rating forklifts:	70 kN (DIN 1055-3)
Supply length:	3 mtr

DESIGNS

ARTICLE NO.	PROFILE HEIGHT (h)	RECESS (BxT)
AL.5.210/43	43 mm	330 x 53 mm
AL.5.210/53	53 mm	330 x 63 mm
AL.5.210/65	65 mm	330 x 75 mm
AL.5.210/75	75 mm	330 x 85 mm

Special heights on request.



AL.5.210

Subject to technical change without notice.