



AL.5.120/..

- for normal loads
- three-dimensional absorption of movements
- anti-slip surface
- solid full-aluminium structure

FEATURES

resistant to heavy loads, trafficable by fork-lift trucks, perforated bearing legs guarantee the best connection to the substrate/covering

APPLICATIONS

all industrial applications, shopping centres, railway stations, airports, exhibition halls

MATERIAL

aluminium

COVERING TYPES

coating, concrete, screed, industrial coverings, natural and stone slabs

TRAFFICABILITY

industrial trucks (lifting trucks, fork-lifts etc.), passenger cars, trucks

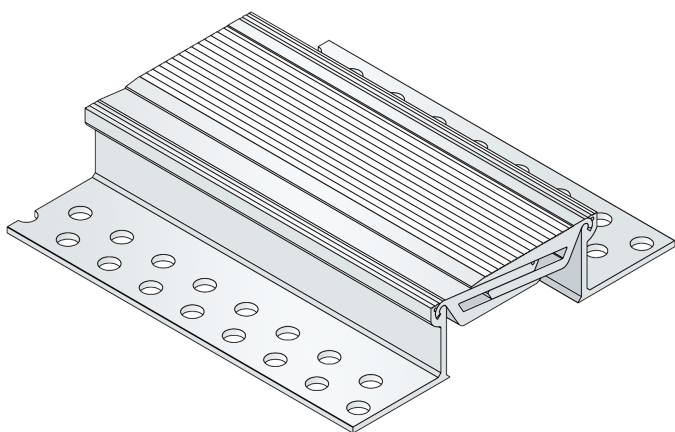
FORMED PARTS

corner piece, T-piece, cross piece, floor-wall connections

NOTES

Depending on the floor covering, we recommend installing a grouting seal between the joint profile and the covering to prevent the hairline crack caused by the building physics.

From a profile height of 200 mm, the joint profile is stiffened at the sides with gusset plates.



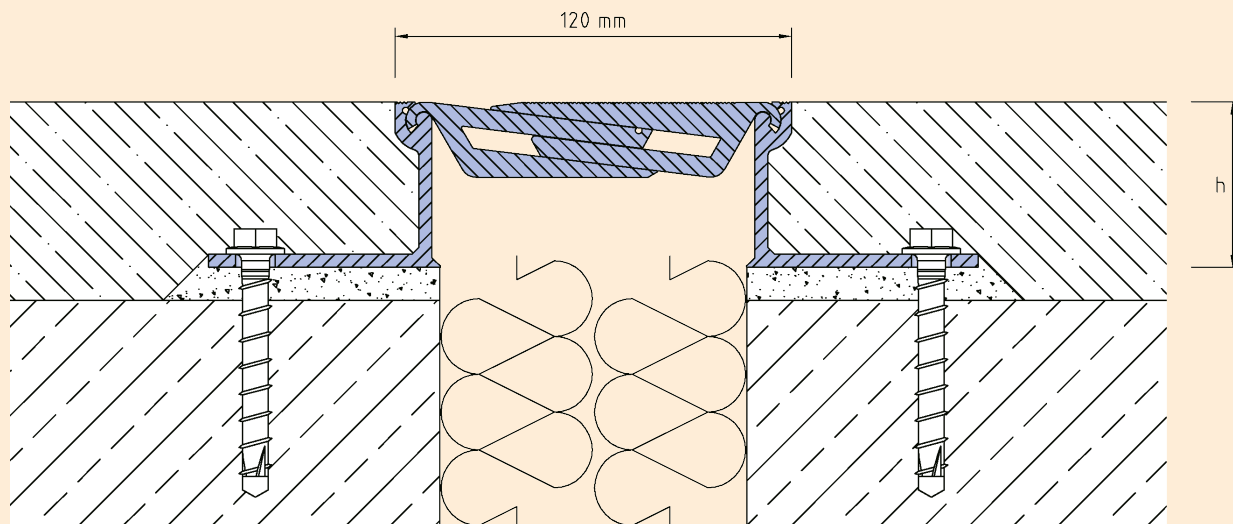
TECHNICAL DATA

Movement horizontal:	40 mm (± 20 mm)
Movement vertical:	20 mm (± 10 mm)
Visible width:	120 mm
Maximal joint width:	95 mm
Load rating:	wheel load 1000 kg up to \varnothing 150 mm, B = 100 mm
Load rating trucks:	300 kN (DIN 1072)
Load rating forklifts:	70 kN (DIN 1055-3)
Supply length:	3 mtr

DESIGNS

ARTICLE NO.	PROFILE HEIGHT ^(h)	RECESS ^(BxT)
AL.5.120/25	25 mm	280 x 35 mm
AL.5.120/37	37 mm	280 x 47 mm
AL.5.120/50	50 mm	280 x 60 mm
AL.5.120/65	65 mm	280 x 75 mm
AL.5.120/80	80 mm	280 x 90 mm
AL.5.120/100	100 mm	310 x 110 mm
AL.5.120/120	120 mm	310 x 130 mm

Special heights on request.



AL.5.120

Subject to technical change without notice.