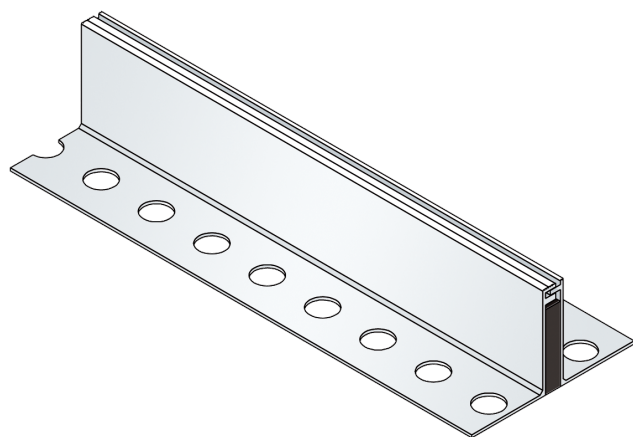




## AL.5.11/..

- for medium loads
- narrow visible surface
- anti-slip surface
- solid full-aluminium structure



### FEATURES

resistant to heavy loads, trafficable by fork-lift trucks, perforated bearing legs guarantee the best connection to the substrate/covering

### APPLICATIONS

all industrial applications, shopping centres, railway stations, airports, exhibition halls

### MATERIAL

aluminium, K/VA foam material in the central section

### COVERING TYPES

coating, concrete, screed, industrial coverings, natural and stone slabs

### TRAFFICABILITY

industrial trucks (lifting trucks, fork-lifts etc.), passenger cars, trucks

### FORMED PARTS

corner piece, T-piece, cross piece

### NOTES

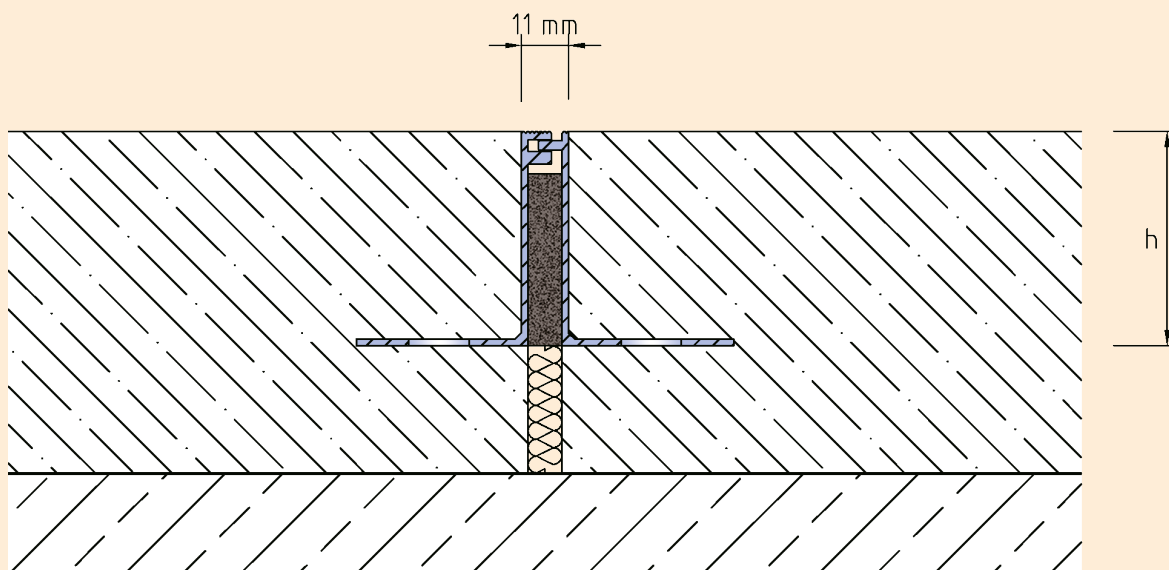
Depending on the floor covering, we recommend installing a grouting seal between the joint profile and the covering to prevent the hairline crack caused by the building physics.

### TECHNICAL DATA

Movement horizontal:	4 mm ( $\pm 2$ mm)
Visible width:	11 mm
Maximal joint width:	8 mm
Load rating:	wheel load 1500 kg up to $\varnothing$ 150 mm, B = 100 mm
Load rating trucks:	600 kN (DIN 1072)
Load rating forklifts:	100 kN (DIN 1055-3)
Supply length:	4 mtr

### DESIGNS

ARTICLE NO.	PROFILE HEIGHT <sup>(h)</sup>
AL.5.11/25	25 mm
AL.5.11/35	35 mm
AL.5.11/50	50 mm



AL.5.11

Subject to technical change without notice.