



## AL.2.35/.. G

- replaceable expansion insert
- hygiene-friendly and smooth expansion insert
- non-PVC

### FEATURES

expansion insert can be replaced anytime, abrasion-, weather- and temperature-resistant (-40°C to +120°C), perforated bearing legs guarantee the best connection to the substrate/covering

### APPLICATIONS

residential, office and administration buildings, hospitals and clean rooms

### MATERIAL

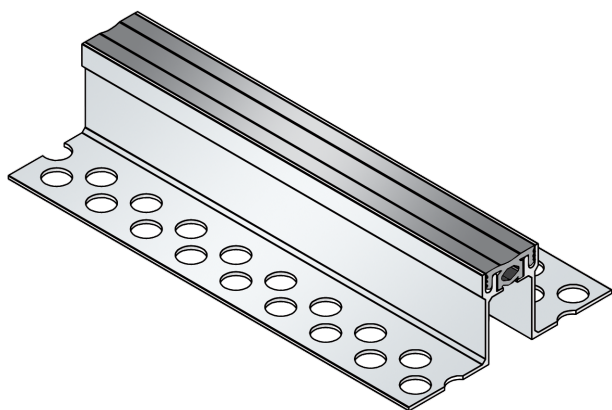
aluminium, EPDM expansion insert

### COVERING TYPES

screed, natural and stone slabs

### FORMED PARTS

corner piece, T-piece, cross piece

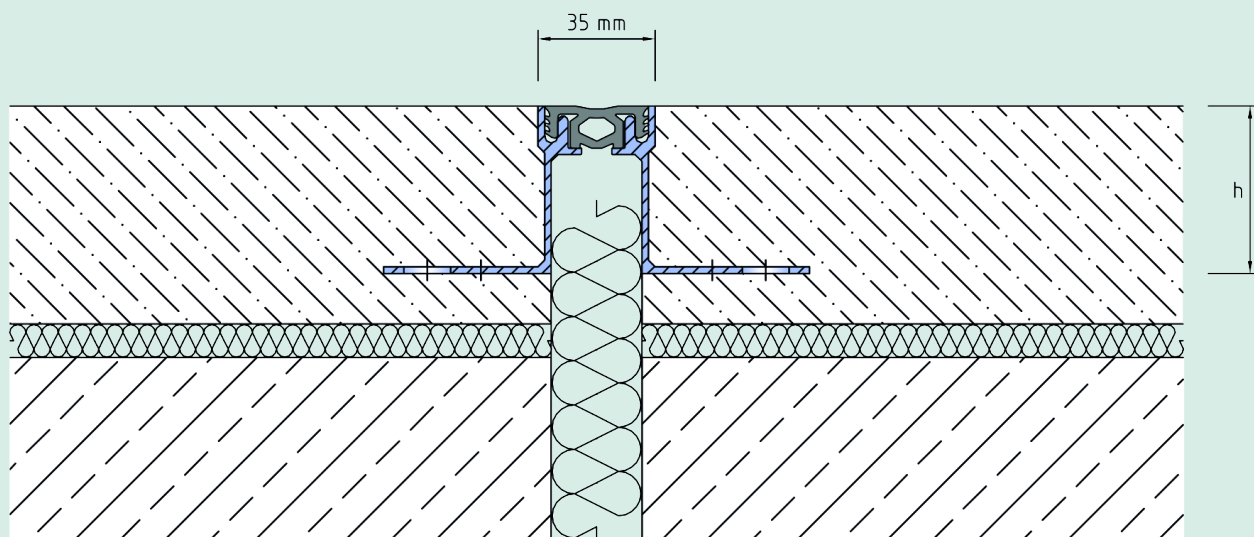


### TECHNICAL DATA

Movement horizontal:	6 mm ( $\pm 3$ mm)
Movement vertical:	6 mm ( $\pm 3$ mm)
Visible width:	35 mm
Maximal joint width:	30 mm
Load rating:	wheel load 500 kg up to $\varnothing$ 150 mm, B = 100 mm
Supply length:	3 mtr
Color of expansion insert:	grau

### DESIGNS

ARTICLE NO.	PROFILE HEIGHT <sup>(h)</sup>
AL.2.35/20 G	20 mm
AL.2.35/35 G	35 mm
AL.2.35/50 G	50 mm



AL.2.35

Subject to technical change without notice.