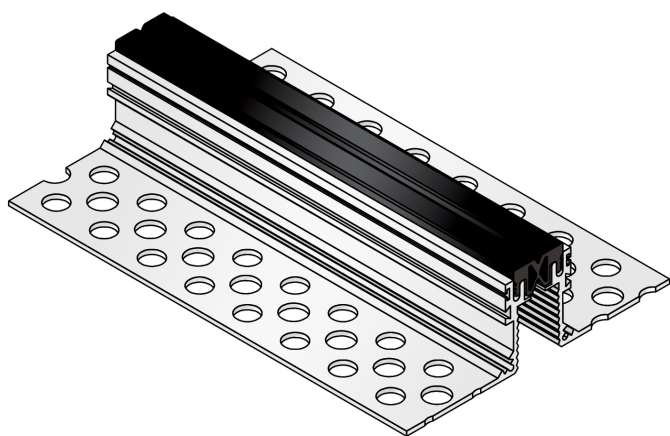




## AL.1.31/.. Ü

- replaceable expansion insert
- non-PVC
- projecting expansion insert
- stable aluminum supports



### FEATURES

expansion insert can be replaced anytime, abrasion-, weather- and temperature-resistant (-40°C to +120°C), perforated bearing legs guarantee the best connection to the substrate/covering, the joint profile is laid with a flush insert during the screed work and can therefore be used as a stripping edge, the overlap inlay supplied separately on rollers is replaced with the existing inlay during the covering work

### APPLICATIONS

residential, office and administration buildings

### MATERIAL

aluminium, EPDM expansion insert

### COVERING TYPES

screed with upper layer from linoleum, rubber or carpet

### FORMED PARTS

corner piece, T-piece, cross piece, floor-wall connections

### NOTES

Projection of the expansion insert: 5 mm

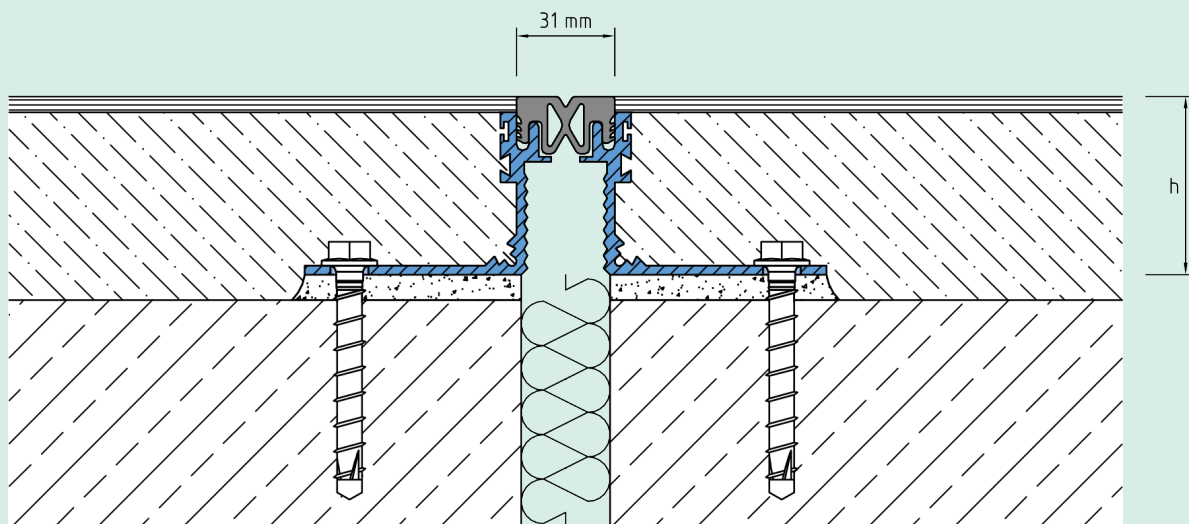
### TECHNICAL DATA

Movement horizontal:	10 mm (±5 mm)
Movement vertical:	8 mm (±4 mm)
Visible width:	31 mm
Maximal joint width:	30 mm
Load rating:	wheel load 700 kg up to Ø 150 mm, B = 100 mm
Supply length:	3 mtr
Color of expansion insert:	schwarz oder grau

### DESIGNS

ARTICLE NO.	PROFILE HEIGHT (h)	RECESS (BxT)
AL.1.31/25 Ü	25 mm	200 x 30 mm
AL.1.31/38 Ü	38 mm	200 x 43 mm
AL.1.31/55 Ü	55 mm	200 x 60 mm
AL.1.31/68 Ü	68 mm	200 x 73 mm
AL.1.31/88 Ü	88 mm	200 x 93 mm
AL.1.31/108 Ü	108 mm	200 x 113 mm
AL.1.31/128 Ü	128 mm	200 x 133 mm

Special heights on request.



# AL.1.31

Subject to technical change without notice.