



## AL.2.31/.. ÜG

- replaceable flexible insert
- hygienic, smooth insert
- Non-PVC
- projecting flexible insert

### FEATURES

expansion insert can be replaced anytime, abrasion, weather and temperature resistant (-40°C bis +120°C), punched bearing legs guarantee best connection to the subgrade/covering., the profile is fitted as part of floor-laying work with a surface-flush insert and can therefore be used as a strip edge., as the floor is being laid, the existing insert is replaced by a projecting insert provided separately on rolls.

### APPLICATIONS

residential, office and administration buildings, hospitals and clean rooms

### MATERIAL

aluminium, synthetic rubber flexible insert (EPDM)

### COVERING TYPES

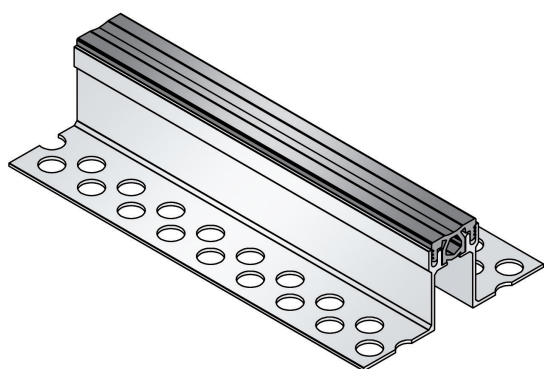
screed with upper layer from linoleum, rubber or carpet

### FORMED PARTS

corner piece, T piece, cross piece

### NOTES

Projection flexible insert: 3 mm

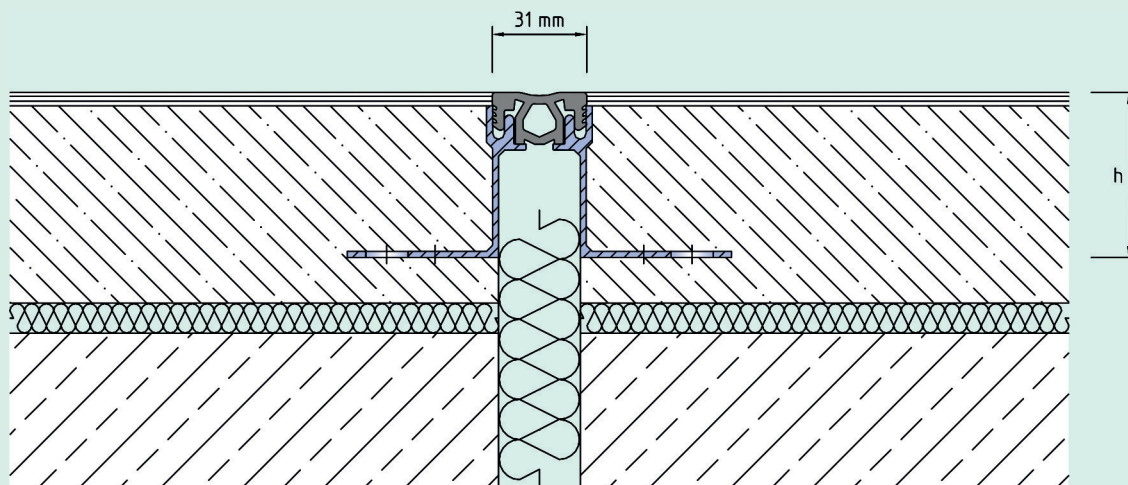


### Technical data

Movement horizontal:	6 mm (±3 mm)
Movement vertical:	6 mm (±3 mm)
Visible width:	31 mm
Maximal joint width:	30 mm
Load rating:	wheel load 500 kg up to Ø 150 mm, B = 100 mm
Supply length:	3 mtr
Color of flexible insert:	grey

### Designs

Article No.	Profile height (h)
AL.2.31/23 ÜG	23 mm
AL.2.31/38 ÜG	38 mm
AL.2.31/53 ÜG	53 mm



AL.2.31

Subject to technical change without notice.